



**AKAI**

**DVD-RECEIVER  
WITH TFT MONITOR**

Model:  
ADV-61DR

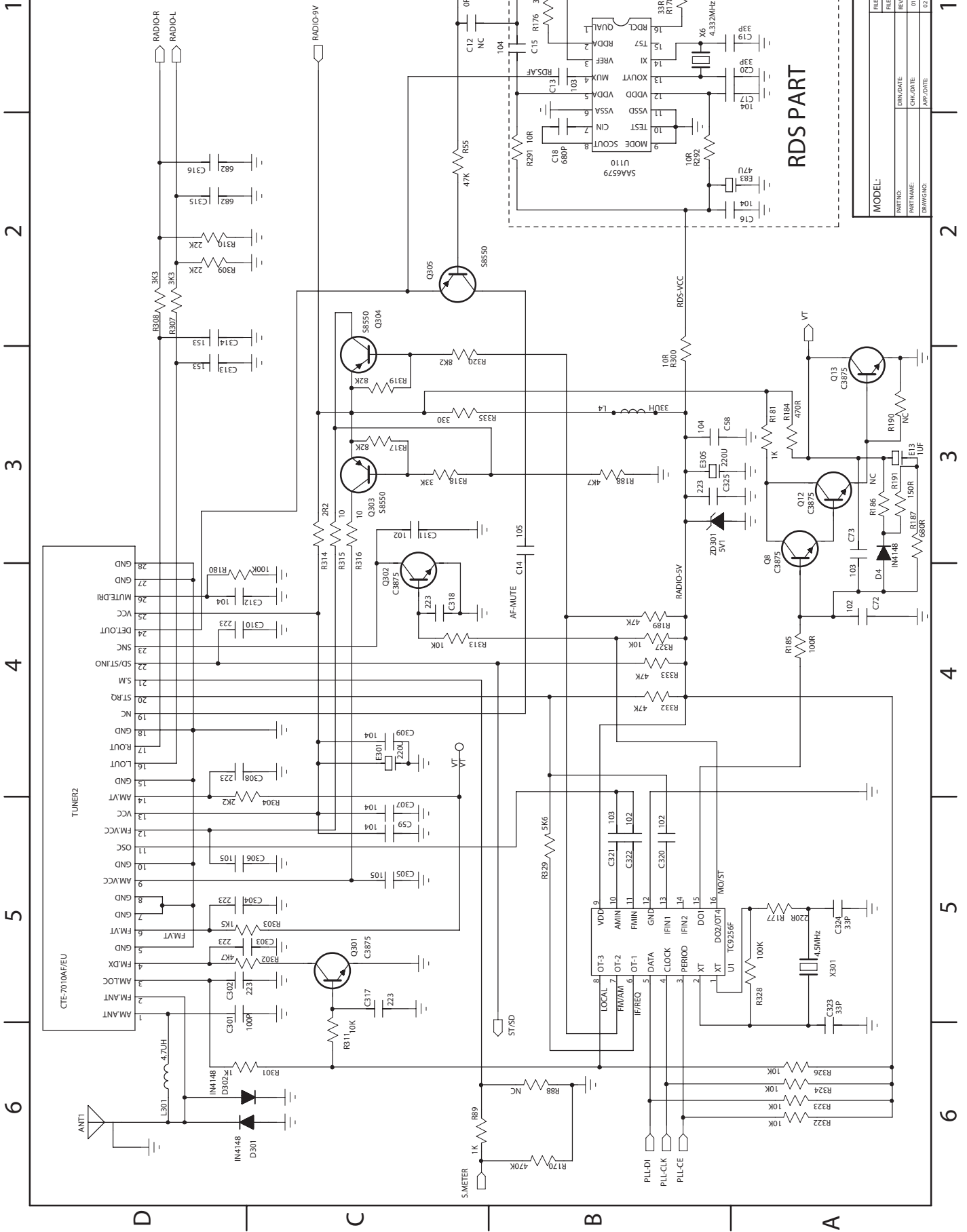
**SERVICE MANUAL**





# Main PCB SCH

DRAWG SIZE: A3

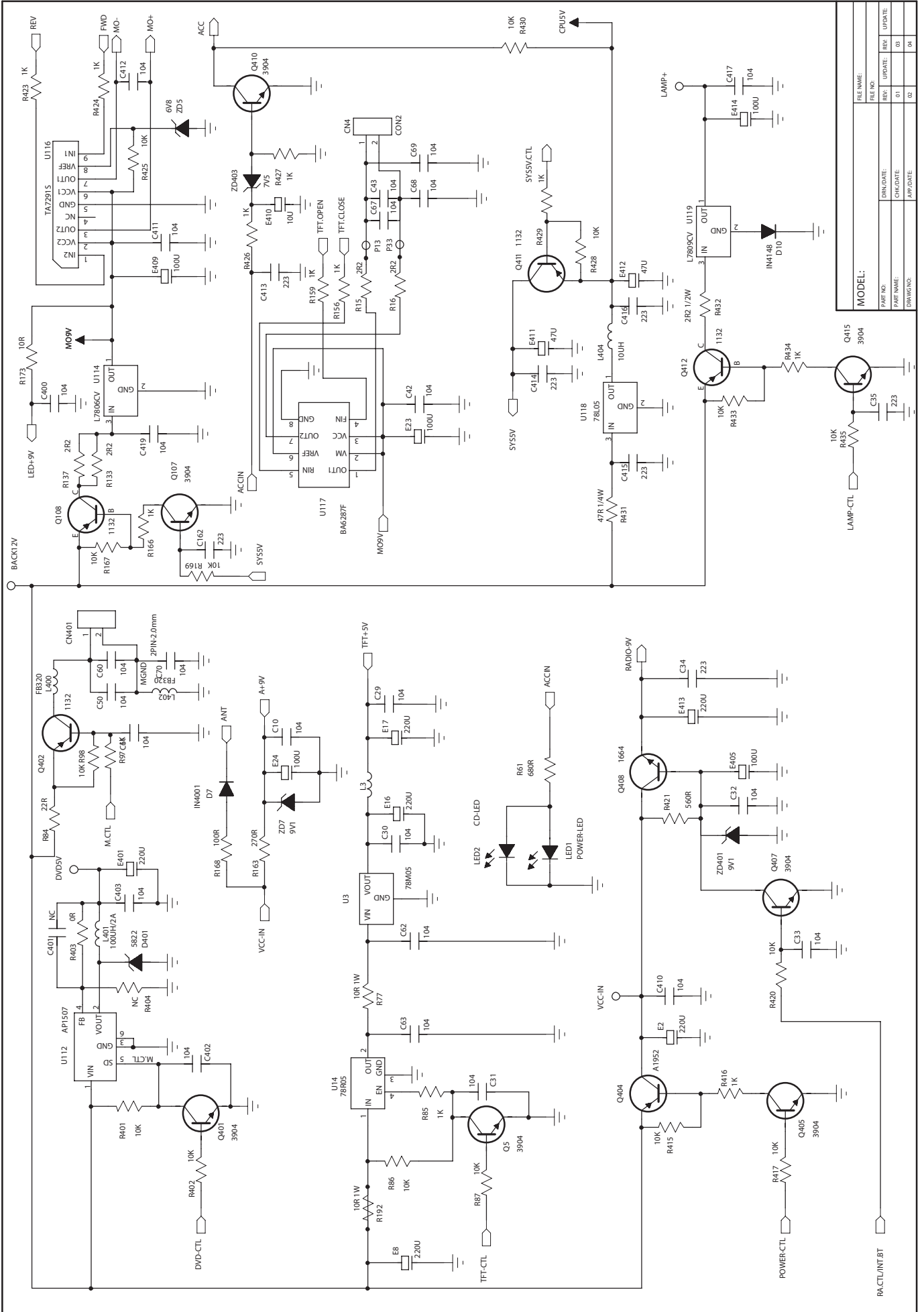


MODEL:		REV. NO.		REV. DATE	
FILE NAME:	FILE NO.	REV. NO.	REV. DATE	REV. NO.	REV. DATE
PART NAME:	PART NO.	REV. NO.	REV. DATE	REV. NO.	REV. DATE
DRAWING NO.	DRAWING DATE	DRAWING NO.	DRAWING DATE	DRAWING NO.	DRAWING DATE

1 2 3 4 5 6

D C B A

# Main PCB SCH

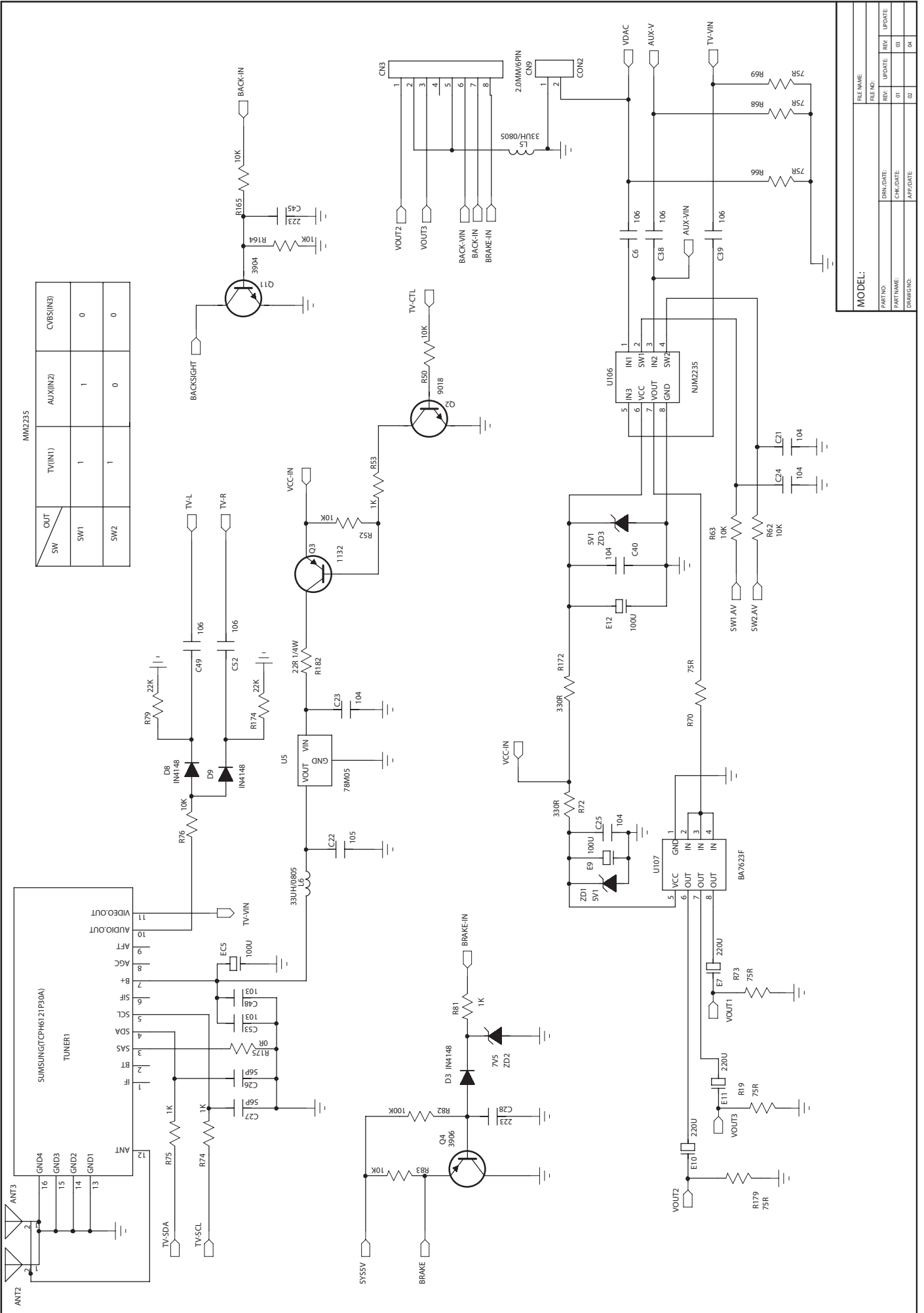


FILE NAME:		REV:		DATE:	
REV:	01	DATE:	01	REV:	01
CHKDATE:		APP DATE:		Q2:	04
DRAWING NO:					

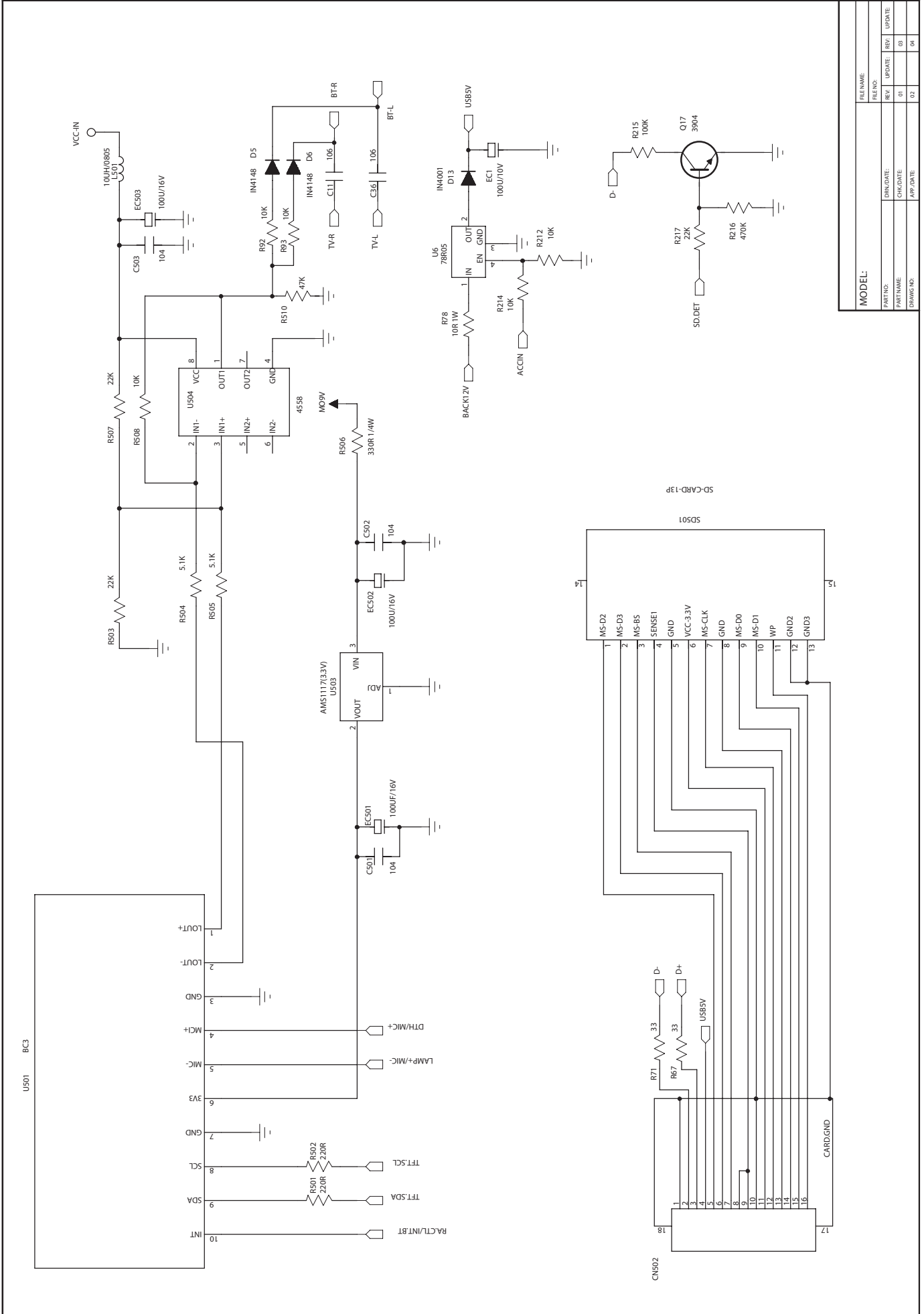
MODEL:	
PART NO:	
PART NAME:	
DRAWING NO:	

MODEL:	
PART NO:	
PART NAME:	
DRAWING NO:	

# Main PCB SCH



# Main PCB SCH



MODEL:		REV. NO.		REV. DATE		REV. DATE	
PART NO.	DATE	REV.	DATE	REV.	DATE	REV.	DATE
PART NAME	CHK/DATE	01		03		04	
DRAWING NO.	APP/DATE	02					

Part Code	Name/Description	Unit	Qty	Location
AN0RDV783100-00-00	CONTRACTIVE D=3.0MM 150MM HIG	PCS	0.00	1.
AS0R00000100-03-00	O 100MM	PCS	1.00	
CC0R10110540-00-00	CHIP CAP 0603 101P NPO 50V +/-5%	PCS	5.00	C301.113.111.110.100
CC0R10215540-00-00	CHIP CAP 0603 102P NPO 50V +/-5%	PCS	5.00	C72.8.322.320.311
CC0R10310540-00-00	CHIP CAP 0603 103P 50V X7R +/-10%	PCS	2.00	C321.73.D C53.48.79.80. TV C1
CC0R10410540-00-00	CHIP CAP 0603 104P 25V X7R +/-10%	PCS	52.00	C309.50.10.114.112.150.109.312.307.411.140.402.403.7.9.3.419
CC0R10510300-00-00	CHIP CAP 0805 U =1.25MM 1UF X7R 25V +/-10%	PCS	4.00	C132.135.134.133.D C52.49. TV
CC0R10510540-00-00	CHIP CAP 0603 1UF X7R 16V +/-10%	PCS	3.00	C14.305.306.D C22.78. TV
CC0R10674100-00-00	CHIP CAP 0805 U =1.25MM 10UF Y5V 10V -20/+80%	PCS	22.00	C41.37.6.38.39.119.120.118.117.104.103.108.107.102.101.106.1
CC0R15210540-00-00	CHIP CAP 0603 152P 50V X7R +/-10%	PCS	2.00	C122.121
CC0R15310540-00-00	CHIP CAP 0603 153P 50V X7R +/-10%	PCS	2.00	C314.313
CC0R15410540-00-00	CHIP CAP 0603 154P 50V X7R +/-10%	PCS	4.00	C128.127.126.125
CC0R22115540-00-00	CHIP CAP 0603 221P NPO 50V +/-5%	PCS	2.00	C46.47
CC0R22310540-00-00	CHIP CAP 0603 223P X7R 50V +/-10%	PCS	19.00	C45.35.34.28.414.413.416.415.303.302.317.304.308.318.325.310
CC0R22410540-00-00	CHIP CAP 0603 224P 50V X7R +/-10%	PCS	1.00	C44
CC0R22510540-00-00	CHIP CAP 0805 U =1.25MM 225 X7R 16V +/-10%	PCS	2.00	C157.156
CC0R27015540-00-00	CHIP CAP 0603 27P NPO 50V +/-5%	PCS	4.00	C5.4.1.2
CC0R33015540-00-00	CHIP CAP 0603 33P NPO 50V +/-5%	PCS	2.00	C323.324D C20.19.RDS
CC0R47110540-00-00	CHIP CAP 0603 471P NPO 50V +/-5%	PCS	4.00	C65.64.74.75
CC0R68110540-00-00	CHIP CAP 0603 681P X7R 50V +/-10%	PCS	6.00	C129.139.138.136.137.447D C18.RD
CC0R68210540-00-00	CHIP CAP 0603 682P X7R 50V +/-10%	PCS	2.00	C315.316
CF0R13276101-00-00	CRYSTAL 32.768KHZ 2LEG 3*8MM	PCS	1.00	X3
CF0R14332301-00-00	CRYSTAL 4.332MHZ 2LEG HC-49/US	PCS	0.00	X6.RDS9
CF0R17200301-00-00	CRYSTAL 7.2MHZ 2LEG HIGH=3MM	PCS	1.00	X301
CF0R18000300-00-00	CRYSTAL 8.0MHZ 2LEG	PCS	1.00	X1
CH0R01478020-00-00	SMD INDUCTOR 0805 4.7UH +/-10%	PCS	1.00	L301



Part Code	Name/Description	Unit	Qty	Location
CH0R04310000-01-00	CHIP FERRITE BEAD 0805 FB-310	PCS	4.00	L402.400.2.1
CH0R04310000-02-00	CHIP FERRITE BEAD 0603 FB-310	PCS	5.00	FB14.FB15.FB16.FB12D FB7c AUX
CH0R09100900-01-00	CHIP INDUCTANCE 0805 10UH+/-20% 20MA	PCS	1.00	L404
CH0R09221000-00-00	CHIP INDUCTANCE CPL-0504(CD54) 220uH/0.3A +/-10%	PCS	2.00	L3.5
CH0R09330000-00-00	CHIP INDUCTANCE 0805 33UH+/-10%	PCS	1.00	L4D L6. TV
CH0R09470000-00-01	CHIP INDUCTANCE 7B12N-470K 47UH 12X12X5.2MM	PCS	1.00	L401
CR0R00050410-00-00	CHIP RESISTOR 0603 0 OHM 1/10W 50V +/-5%	PCS	10.00	R171.FB4.FB17.FB18.FB19.R403.R5 8.R60D FB25.FB24.c AUXd R
CR0R00051210-00-00	CHIP RESISTOR 0805 0 1/8W 100V +/-5%	PCS	2.00	C56.C55
CR0R00051510-00-00	CHIP RESISTOR 1206 0 OHM 1/4W 200V +/-5%	PCS	1.00	R218
CR0R10050410-00-00	CHIP RESISTOR 0603 10 OHM 1/10W 50V +/-5%	PCS	4.00	R316.315.300.138
CR0R10051510-00-00	CHIP RESISTOR 1206 10 OHM 1/4W 200V +/-5%	PCS	1.00	R173
CR0R10053000-00-00	RESISTOR 10 OHM 1W +/-5%	PCS	1.00	R78D R182. TV
CR0R10150410-00-00	CHIP RESISTOR 0603 100 OHM 1/10W 50V +/-5%	PCS	1.00	R185
CR0R10150510-00-00	CHIP RESISTOR 1206 100 OHM 1/4W 200V +/-5%	PCS	1.00	R91
CR0R10250410-00-00	CHIP RESISTOR 0603 1K OHM 1/10W 50V +/-5%	PCS	27.00	R97.468.89.159.156.429.81.122.120.4 26.427.136.135.30.434.423
CR0R10350410-00-00	CHIP RESISTOR 0603 10K OHM 1/10W 50V +/-5%	PCS	60.00	R98.6.165.164.169.167.40.87.86.83.4 28.417.415.420.430.435.63
CR0R10450410-00-00	CHIP RESISTOR 0603 100K OHM 1/10W 50V +/-5%	PCS	9.00	R1.467.82.180.328.155.151.196.215
CR0R10853000-00-00	RESISTOR 1 OHM 1W +/-5%	PCS	1.00	R192
CR0R12350410-00-00	CHIP RESISTOR 0603 12K OHM 1/10W 50V +/-5%	PCS	3.00	R95.121.123
CR0R12450410-00-00	CHIP RESISTOR 0603 120K OHM 1/10W 50V +/-5%	PCS	1.00	R456
CR0R15150410-00-00	CHIP RESISTOR 0603 151 OHM 1/10W 50V +/-5%	PCS	4.00	R191.69.73.205
CR0R15250410-00-00	CHIP RESISTOR 0603 1K5 OHM 1/10W 50V +/-5%	PCS	1.00	R303
CR0R15350410-00-00	CHIP RESISTOR 0603 15K OHM 1/10W 50V +/-5%	PCS	1.00	
CR0R18150510-00-00	CHIP RESISTOR 1206 181 OHM 1/4W 200V +/-5%	PCS	3.00	R162.115.112
CR0R18450210-00-00	CHIP RESISTOR 0805 180K OHM 1/8W 100V +/-5%	PCS	1.00	7020
CR0R20350410-00-00	CHIP RESISTOR 0603 20K OHM 1/10W 50V +/-5%	PCS	4.00	R111.106.105.100

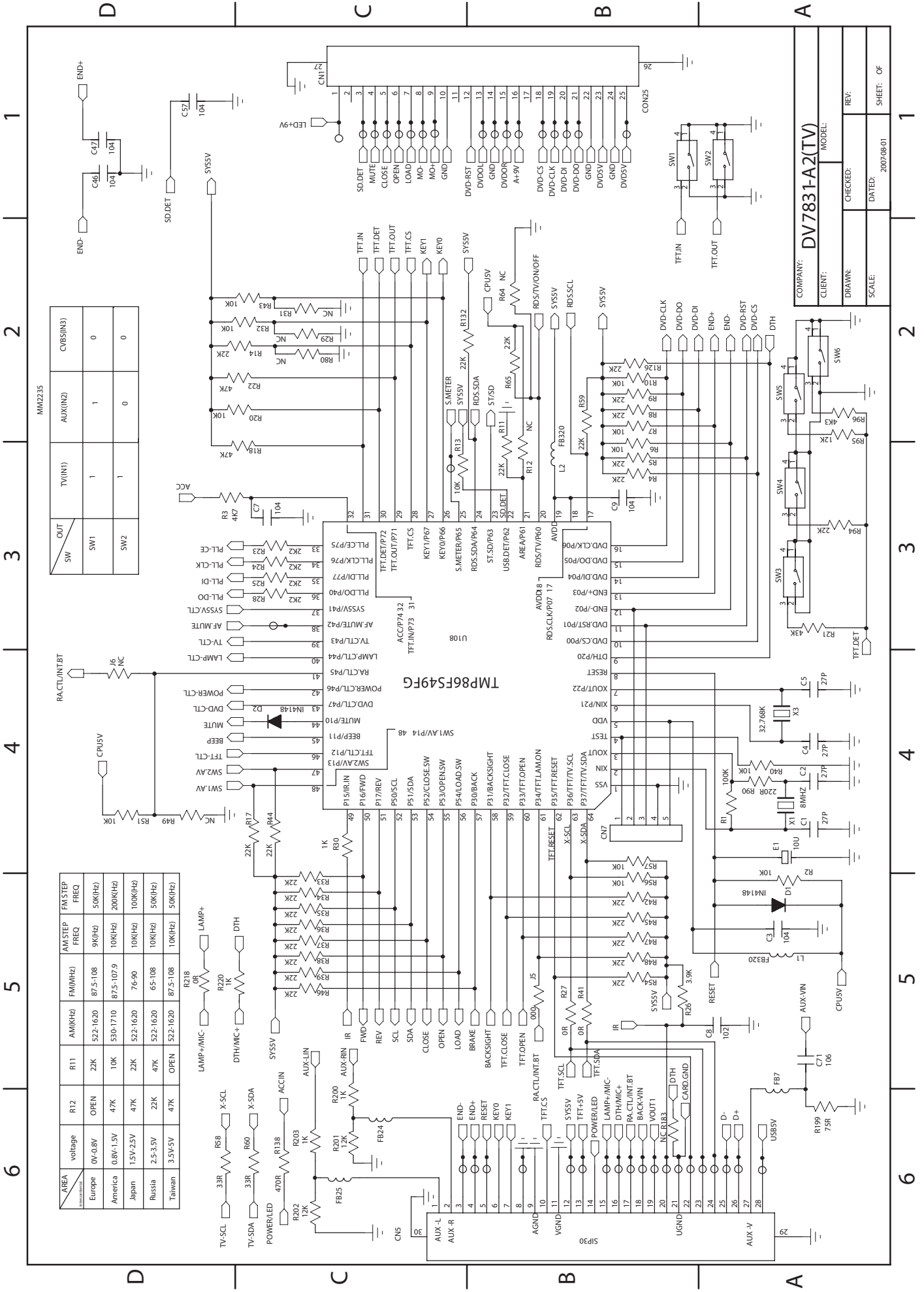
Part Code	Name/Description	Unit	Qty	Location
CR0R22050510-00-00	CHIP RESISTOR 1206 22 OHM 1/4W 200V +/-5%	PCS	1.00	R84
CR0R22150410-00-00	CHIP RESISTOR 0603 221 OHM 1/10W 50V +/-5%	PCS	2.00	R90.177
CR0R22250410-00-00	CHIP RESISTOR 0603 2K2 OHM 1/10W 50V +/-5%	PCS	9.00	R28.25.24.23.304.130.131.125.127
CR0R22350410-00-00	CHIP RESISTOR 0603 22K OHM 1/10W 50V +/-5%	PCS	27.00	R132.126.94.59.54.48.47.45.42.46.44.17.39.38.37.36.35.34.33.
CR0R22350510-00-00	CHIP RESISTOR 1206 22K 1/4W OHM 200V +/-5%	PCS	0.00	2 D8.9. TV
CR0R22450410-00-00	CHIP RESISTOR 0603 220K OHM 1/10W 50V +/-5%	PCS	4.00	R149.146.140.143
CR0R22850510-00-00	CHIP RESISTOR 1206 2.2 OHM 1/4W 200V +/-5%	PCS	6.00	R314.137.133.15.16.D13
CR0R22852000-00-00	RESISTOR 2.2 OHM 1/2W +/-5%	PCS	1.00	R432
CR0R27150510-00-00	CHIP RESISTOR 1206 271 OHM 1/4W 200V +/-5%	PCS	1.00	R163
CR0R33050410-00-00	CHIP RESISTOR 0603 33 OHM 1/10W 50V +/-5%	PCS	3.00	R71.67.70D R178.176.RDS9E
CR0R33150510-00-00	CHIP RESISTOR 1206 331 OHM 1/4W 200V +/-5%	PCS	3.00	R335.72.172
CR0R33250410-00-00	CHIP RESISTOR 0603 3K3 OHM 1/10W 50V +/-5%	PCS	11.00	R142.109.107.103.102.308.307.148.145.139.207
CR0R33350410-00-00	CHIP RESISTOR 0603 33K OHM 1/10W 50V +/-5%	PCS	4.00	R318.168.116.118
CR0R39250410-00-00	CHIP RESISTOR 0603 3K9 OHM 1/10W 50V +/-5%	PCS	1.00	R26
CR0R39450410-00-00	CHIP RESISOTR 0603 390K OHM 1/10W 50V +/-5%	PCS	4.00	R449.450.447.448
CR0R43250410-00-00	CHIP RESISTOR 0603 4K3 OHM 1/10W 50V +/-5%	PCS	1.00	R96
CR0R43350410-00-00	CHIP RESISTOR 0603 43K OHM 1/10W 50V +/-5%	PCS	1.00	R21
CR0R47051000-00-00	RESISTOR 47 OHM 1/4W +/-5%	PCS	1.00	R431
CR0R47150410-00-00	CHIP RESISTOR 0603 471 OHM 1/10W 50V +/-5%	PCS	5.00	R184.179.19.41.27.
CR0R47250410-00-00	CHIP RESISTOR 0603 4K7 OHM 1/10W 50V +/-5%	PCS	3.00	R188.302.3
CR0R47350410-00-00	CHIP RESISTOR 0603 47K OHM 1/10W 50V +/-5%	PCS	10.00	R459.458.55.332.333.152.22.18.189.R12
CR0R47450410-00-00	CHIP RESISTOR 0603 470K OHM 1/10W 50V +/-5%	PCS	2.00	R170.216
CR0R56150410-00-00	CHIP RESISTOR 0603 561 OHM 1/10W 50V +/-5%	PCS	2.00	R460.421
CR0R56250410-00-00	CHIP RESISTOR 0603 5K6 OHM 1/10W 50V +/-5%	PCS	15.00	R129.128.329.150.147.141.144.197.198.194.85.193.77.210.211
CR0R56350000-00-00	RESISTOR 56K OHM 1/8W +/-5%	PCS	2.00	FA
CR0R56350410-00-00	CHIP RESISTOR 0603 56K OHM 1/10W 50V +/-5%	PCS	2.00	FB21.FB23

Part Code	Name/Description	Unit	Qty	Location
CR0R68150410-00-00	CHIP RESISTOR 0603 681 OHM 1/10W 50V +/-5%	PCS	4.00	R187.134.61.204
CR0R75050410-00-00	CHIP RESISTOR 0603 75 OHM 1/10W 50V +/-5%	PCS	1.00	R66
CR0R82250410-00-00	CHIP RESISTOR 0603 8K2 OHM 1/10W 50V +/-5%	PCS	1.00	R320
CR0R82350410-00-00	CHIP RESISTOR 0603 82K OHM 1/10W 50V +/-5%	PCS	2.00	R317.319
DI0R14001080-00-00	CHIP RECTIFIER 1N4001 (1206)	PCS	1.00	D7
DI0R15822080-00-00	CHIP SIGNAL DIODE 1N5822 SMD	PCS	1.00	D401
DI0R24148080-00-00	SIGNAL DIODE 1N4148 (1206) SMD (LL34)	PCS	9.00	D11.3.10.301.302.1.2.4.12
DI0R30207080-00-00	CHIP ZENER 2V7 1206 1/2W SMD +/-2%	PCS	1.00	ZD102
DI0R30501080-01-00	CHIP ZENER DIODE ZMM5V1 1206 1/2W SMD +/-2%	PCS	3.00	ZD3.1.301
DI0R30608080-01-00	ZENER SILICON 6V8 1/2W (1206) SMD +/-2%	PCS	1.00	ZD5
DI0R30705080-00-00	CHIP ZENER SILICON 7V5 (1206) 1/2W +/-2%	PCS	2.00	ZD2.403
DI0R30901080-00-00	ZENER SILICON 9V1 1/2W (1206) SMD +/-2%	PCS	3.00	ZD7.401.101
DK0R60007012-00-00	PPN7PA12C	PCS	1.00	
EC0R10509052-01-00	1UF 50V +/-10% (4X5MM)-40+105"	PCS	1.00	E13
EC0R10609032-01-00	10UF 25V +/-10% 4X5MM -40+105"	PCS	2.00	E410.1
EC0R10709022-01-00	100UF 16V +/-10% 6.3X5MM -40+105"	PCS	14.00	E6.E4.E23.E24.E409.E414.E102.E12. E9.E109.E100.E405.EC1.E14D
EC0R22504053-01-00	2.2UF 50V +/-10% 4X5MM 40+105"	PCS	1.00	E3.D E84.RDS9E
EC0R22609021-01-00	22UF 16V +/-10% -40+105" (4X5MM) I=0.004CV or0.4	PCS	1.00	E103
EC0R22704011-01-00	220UF 10V +/-20% -40+105" 6.3X5MM I=0.004CV or 0	PCS	6.00	E10.11.7.413.301.305
EC0R22704020-01-00	220UF 16V +/-20% -40+105" 6.3X11MM I=0.004CV or0.	PCS	1.00	E17
EC0R22704021-01-00	220UF 16V +/-20% 8X5MM -40+105" I=0.004CV (8X5MM)	PCS	4.00	E2.16.401.8
EC0R33809020-01-00	3300UF 16V +/-20% -40+105" (13X22MM) I=0.004CV or	PCS	1.00	E22
EC0R47504053-01-00	4U7 50V +/-10% (4X5MM) -40+105"	PCS	2.00	E108.5
EC0R47604024-01-00	47UF 16V +/-20%(6.3X5MM)-40+105" I=0.004CV	PCS	6.00	E110.411.412.101.106.83.
FA0R12510120-00-00	FAN RATED VOLTAGE DFS251012M 12V 25X25X10MM (GO 100MM)	PCS	1.00	
FS0R01000002-00-00	FUSE 100MA 1206	PCS	1.00	R195

Part Code	Name/Description	Unit	Qty	Location
IC0R17805300-00-00	IC 78M05 DPAK TO-252-2L	PCS	1.00	D U3, DV7830.40.90.91de U5. TV
IC0R17805301-00-00	IC 78L05 SOT-89 3PIN	PCS	1.00	U118
IC0R17805802-00-00	IC KA78R05 TO220F-4L 4PIN 1A	PCS	1.00	U6
IC0R17806300-00-00	IC 78M06	PCS	1.00	U114
IC0R17808802-00-00	IC KA78R08 TO220F-4L 4PIN	PCS	1.00	U14
IC0R17809500-00-00	IC 78M09 TO252 3PIN	PCS	1.00	U119
IC0R30086301-03-00	MCU TMP86FS49FG P-QFP64 1414-080A > TV	PCS	1.00	U108
IC0R31507600-00-00	IC AP1507-5V TO252-5L	PCS	1.00	U112
IC0R31923300-00-00	IC BU1923F=PT2579 SOP16 (RDS)	PCS	0.00	U110.RDS9
IC0R32235300-00-00	IC NJM2235 SOP 8PIN	PCS	1.00	U106
IC0R32312300-00-00	IC PT2312 SOP 32PIN	PCS	1.00	U103
IC0R34558300-00-00	IC YM4558M SO-8PIN	PCS	3.00	U2.102.101
IC0R37291200-00-00	IC TA7291S SIP9	PCS	1.00	U116
IC0R37388800-00-00	IC TDA7388 FIEXIWATTIS 25PIN	PCS	1.00	U104
IC0R37623300-00-00	BA7623 SO8	PCS	1.00	U107
IC0R39256300-00-00	IC KIC9256F FLP16	PCS	1.00	U1
IC0R96287300-00-00	IC BA6287F SOP 8PIN	PCS	1.00	U117
IM0-04010010-00-00		G	0.50	Y. t9 0.5G;
IM0-12010011-00-00		G	0.69	SMT9 0.68G;
IM0-13000000-00-00	(63/37: ≠ 0 : )	G	9.30	Y. t9 9.3G;
IM0-40010010-00-00		G	0.50	Y. t9 0.5G;
IM0R21120010-00-00	TAPE ADHESIVE 1/2 1/2A	M	4.00	Y. t9 4CM;
IM0R21180010-00-00	TAPE ADHESIVE 1/8 1/8C	CM	3.50	Y. t9 3.5CM;
IM0R37010010-00-01	0.6MM	G	3.20	AIG9 3.2G
LE0R56120620-00-00	CHIP LED (RED) 0805 SMD	PCS	1.00	LED1
PB0RDV783173-29-F1	P.C.B DV7831-F1 54.8X31MM PH=1.0MM	PCS	0.00	1 TV 9

Part Code	Name/Description	Unit	Qty	Location
PB0RDV783175-01-A2	P.C.B DV7831-A2 169.7X153.9 T=1.6MM " TV	PCS	1.00	
SK0R02020000-00-01	D TYPE CONNECTOR MALE 2P NONE WIRE PH=2.0MM	PCS	3.00	CN4.9.401
SK0R02030010-00-01	3PIN SKCKET PH=2MM	PCS	0.00	CN6. RCA
SK0R02050020-00-02	D TYPE CONNECTOR MALE 5P NONE WIRE PH=2.00MM	PCS	1.00	CN3D , c AUXL 2PCS
SK0R15161060-00-00	CONNECT SOCKET 1.0S-6S-16PWB PH=1.0MM	PCS	1.00	CN502
SK0R15250001-00-00	CHIP WIRE CONNECT SOCKET 25PIN PH=1.00MM	PCS	1.00	CN1
SK0R15280000-00-01	CHIP CONNECT SOCKET 1.0S-1S-28PWB	PCS	1.00	CN5
SK0R29412000-00-00	MMC SOCKET 412D06-09PCSA13	PCS	1.00	SD501
SW0R70220240-00-00	ESE22MH24	PCS	5.00	SW1-5
TR0R60231026-00-00	TRANSISTOR KRC231 NPN SOT-23	PCS	7.00	Q6.1.102.101.10.9.106
TR0R61664824-00-00	CHIP TRANSISTOR 2SD1664-Y NPN SOT-89-3L	PCS	1.00	Q408
TR0R61815824-00-00	CHIP TRANSISTOR HMBT1815 SOT-23 NPN (L6)	PCS	1.00	Q7
TR0R61952800-00-00	CHIP TRANSISTOR PNP A1952	PCS	1.00	Q404
TR0R63875826-00-00	TRANSISTOR KTC3875 GR NPN SOT-23	PCS	7.00	Q301.302.105.8.13.12.14
TR0R63904010-00-00	TRANSISTOR 2N3904K NPN SOT-23	PCS	9.00	Q107.11.5.407.405.410.415.401.17
TR0R69018006-00-00	CHIP TRANSISTOR ZX9018 SOT-23 NPN	PCS	0.00	Q2. TV
TR0R71132800-00-00	CHIP TRANSISTOR 2SB1132 PNP SOT-89	PCS	4.00	Q402.411.412.108 Q3. TV
TR0R73906010-00-00	CHIP TRANSISTOR 2N3906K PNP SOT-23	PCS	1.00	Q4
TR0R78550002-00-00	CHIP TRANSISTOR 8550 PNP SOT-23	PCS	4.00	Q303.305.304.15
TU0R16121000-00-00	CDT-6EPN2-00 TUNER	PCS	0.00	TUNER1(J K )D " TV9E
TU0R50070200-00-00	AM/FM TUNER OIRT 7020 (OIRT VERSION) AM/FM (FM64-108MHZ)	PCS	1.00	
			151	

# SERVO BOARD



MM2235

OUT	SW	TV(IN1)	AUX(IN2)	CVBS(IN3)
	SW1	1	1	0
	SW2	1	0	0

AREA	R11	AM(STEP FREQ)	FM(MHZ)	AM(STEP FREQ)	FM(STEP FREQ)
Europe	22K	522-1620	87.5-108	9K(Hz)	50K(Hz)
America	10K	530-1710	87.5-107.9	10K(Hz)	200K(Hz)
Japan	22K	522-1620	76-90	10K(Hz)	100K(Hz)
Russia	47K	522-1620	65-108	10K(Hz)	50K(Hz)
Taiwan	47K	522-1620	87.5-108	10K(Hz)	50K(Hz)

COMPANY:	DV7831-A2(TV)
CLIENT:	MODEL
DRAWN:	CHECKED:
SCALE:	DATED: 2007-08-01
	REV: OF
	SHEET: OF

Part Code	Name/Description	Unit	Qty	Location
CC0R10010540-00-00	CHIP CAP 0603 10P NPO 50V +/-5%	PCS	3.00	C102.C38.C103
CC0R10110540-00-00	CHIP CAP 0603 101P NPO 50V +/-5%	PCS	7.00	C89.C98.C86.C110.C111.C108.C109
CC0R10215501-00-00	CHIP CAP 0805 102P NPO 50V +/-5%	PCS	2.00	C27.C30
CC0R10215540-00-00	CHIP CAP 0603 102P NPO 50V +/-5%	PCS	5.00	C11.C85.C104.C105.C17
CC0R10310540-00-00	CHIP CAP 0603 103P 50V X7R +/-10%	PCS	6.00	C41.C44.C56.C64.C76.C80
CC0R10410540-00-00	CHIP CAP 0603 104P 25V X7R +/-10%	PCS	61.00	C50.C9.C25.C49.C78.C1.C2.C3.C4.C7.C6.C10.C13.C14.C207.C16.C1
CC0R10510540-00-00	CHIP CAP 0603 1UF X7R 16V +/-10%	PCS	4.00	C53.C58.C60.C88
CC0R10630100-00-00	CHIP CAP 0805 10UF X5R 10V +/-10%	PCS	2.00	C97.C100
CC0R10750040-00-00	TANTALUM CAP 3528 100UF 6.3V +/-10%	PCS	10.00	E5.E4.E2.E3.E15.E10.E7.E8.E9.E6
CC0R22015540-00-00	CHIP CAP 0603 22P NPO 50V +/-5%	PCS	2.00	C203.C204
CC0R22115540-00-00	CHIP CAP 0603 221P NPO 50V +/-5%	PCS	4.00	C95.C99.C106.C107
CC0R22310540-00-00	CHIP CAP 0603 223P X7R 50V +/-10%	PCS	1.00	C15
CC0R22410540-00-00	CHIP CAP 0603 224P 50V X7R +/-10%	PCS	1.00	C43
CC0R27015540-00-00	CHIP CAP 0603 27P NPO 50V +/-5%	PCS	2.00	C5.C12
CC0R30110540-00-00	CHIP CAP 0603 301P NPO 50V +/-10%	PCS	1.00	C42
CC0R33015540-00-00	CHIP CAP 0603 33P NPO 50V +/-5%	PCS	1.00	C66
CC0R33115540-00-00	CHIP CAP 0603 331P X7R 50V +/-10%	PCS	1.00	C36
CC0R47010540-00-00	CHIP CAP 0603 47P NPO 50V +/-5%	PCS	2.00	C77.C79
CC0R47210540-00-00	CHIP CAP 0603 472P 50V X7R +/-10%	PCS	2.00	C28.C29
CC0R47310540-00-00	CHIP CAP 0603 473P X7R 25V +/-10%	PCS	1.00	C40
CC0R68110540-00-00	CHIP CAP 0603 681P X7R 50V +/-10%	PCS	5.00	C48.C51.C52.C57.C61
CC0R82115540-00-00	CHIP CAP 0603 821P NPO 50V +/-5%	PCS	1.00	C37
CF0R12700000-00-00	CRYSTAL B 27MHZ 2LEG 49US +/-10PPM	PCS	1.00	XT1
CH0R04310000-00-00	CHIP FERRITE BEED 1206 FB-310	PCS	8.00	L2.L3.L4.L5.L7.L8.L9.L6
CH0R09100000-00-00	CHIP INDUCTANCE 1206 10UH+/-10%	PCS	2.00	L10.L11
CH0R09100080-00-00	CHIP INDUCTANCE 0805 1uH+/-10%	PCS	1.00	L12

Part Code	Name/Description	Unit	Qty	Location
CH0R09278000-02-00	CHIP INDUCTANCE 0805 2.7UH+/-10%	PCS	2.00	L13.L14
CR0R00050410-00-00	CHIP RESISTOR 0603 0 OHM 1/10W 50V +/-5%	PCS	1.00	R14
CR0R10050210-00-00	CHIP RESISTOR 0805 10 1/8W 100V +/-5%	PCS	1.00	R211
CR0R10050410-00-00	CHIP RESISTOR 0603 10 OHM 1/10W 50V +/-5%	PCS	2.00	R12.R42
CR0R10150410-00-00	CHIP RESISTOR 0603 100 OHM 1/10W 50V +/-5%	PCS	2.00	R37.R38
CR0R10250410-00-00	CHIP RESISTOR 0603 1K OHM 1/10W 50V +/-5%	PCS	6.00	R13.R1.R4.R36.R204.R203
CR0R10350410-00-00	CHIP RESISTOR 0603 10K OHM 1/10W 50V +/-5%	PCS	4.00	R304.R22.R67.R66
CR0R10550410-00-00	CHIP RESISTOR 0603 1M OHM 1/10W 50V +/-5%	PCS	1.00	R10
CR0R10850410-00-00	CHIP RESISTOR 0603 1 OHM 1/10W 50V +/-5%	PCS	2.00	R50.R5
CR0R12250210-00-00	CHIP RESISTOR 0805 1K2 OHM 1/8W 100V +/-5%	PCS	1.00	R41
CR0R15250410-00-00	CHIP RESISTOR 0603 1K5 OHM 1/10W 50V +/-5%	PCS	1.00	R48
CR0R15350410-00-00	CHIP RESISTOR 0603 15K OHM 1/10W 50V +/-5%	PCS	2.00	R2.R3
CR0R15450410-00-00	CHIP RESISTOR 0603 150K OHM 1/10W 50V +/-5%	PCS	3.00	R6.R7.R44
CR0R18450410-00-00	CHIP RESISTOR 0603 180K OHM 1/10W 50V +/-5%	PCS	2.00	R201.R202
CR0R20150410-00-00	CHIP RESISTOR 0603 201 OHM 1/10W 50V +/-5%	PCS	1.00	R40
CR0R20350410-00-00	CHIP RESISTOR 0603 20K OHM 1/10W 50V +/-5%	PCS	1.00	R43
CR0R22250410-00-00	CHIP RESISTOR 0603 2K2 OHM 1/10W 50V +/-5%	PCS	2.00	R20.R21
CR0R22350410-00-00	CHIP RESISTOR 0603 22K OHM 1/10W 50V +/-5%	PCS	2.00	R209.R210.
CR0R22350510-00-00	CHIP RESISTOR 1206 22K 1/4W OHM 200V +/-5%	PCS	0.00	ZD1
CR0R22850210-00-00	CHIP RESISTOR 0805 2.2 OHM 1/8W 100V +/-5%	PCS	1.00	R17
CR0R22850410-00-00	CHIP RESISTOR 0603 2.2 OHM 1/10W 50V +/-5%	PCS	1.00	R45
CR0R27350410-00-00	CHIP RESISTOR 0603 27K OHM 1/10W 50V +/-5%	PCS	2.00	R205.R206
CR0R33050410-00-00	CHIP RESISTOR 0603 33 OHM 1/10W 50V +/-5%	PCS	3.00	R8.R16.R25
CR0R33350210-00-00	CHIP RESISTOR 0805 33K OHM 1/8W 100V +/-5%	PCS	1.00	R33
CR0R39150410-00-00	CHIP RESISOTR 0603 391 OHM 1/10W 50V +/-5%	PCS	2.00	R39.46
CR0R39350410-00-00	CHIP RESISTOR 0603 39K OHM 1/10W 50V +/-5%	PCS	1.00	R24



Part Code	Name/Description	Unit	Qty	Location
CR0R47150410-00-00	CHIP RESISTOR 0603 471 OHM 1/10W 50V +/-5%	PCS	1.00	R60
CR0R47250410-00-00	CHIP RESISTOR 0603 4K7 OHM 1/10W 50V +/-5%	PCS	13.00	R18.R23.R15.R19.R55.R53.R56.R57. R58.R59.R35.R9.R64
CR0R47250710-00-00	RESISTOR 4.7KX4 +/-5% RN4 0603	PCS	1.00	R61
CR0R47350410-00-00	CHIP RESISTOR 0603 47K OHM 1/10W 50V +/-5%	PCS	1.00	R72
CR0R47450410-00-00	CHIP RESISTOR 0603 470K OHM 1/10W 50V +/-5%	PCS	3.00	R27.R28.R31
CR0R51250410-00-00	CHIP RESISTOR 0603 5.1K OHM 1/10W 50V +/-5%	PCS	2.00	R47.R49
CR0R56850410-00-00	CHIP RESISTOR 0603 5.6 OHM 1/10W 50V +/-5% C	PCS	2.00	R30.R32
CR0R68150410-00-00	CHIP RESISTOR 0603 681 OHM 1/10W 50V +/-5%	PCS	1.00	R26
CR0R68350410-00-00	CHIP RESISTOR 0603 68K OHM 1/10W 50V +/-5%	PCS	1.00	R29
CR0R75050410-00-00	CHIP RESISTOR 0603 75 OHM 1/10W 50V +/-5%	PCS	3.00	R62.R63.R34
CR0R82250410-00-00	CHIP RESISTOR 0603 8K2 OHM 1/10W 50V +/-5%	PCS	4.00	R52.R207.R208.R54
DI0R24148080-00-00	SIGNAL DIODE 1N4148 (1206) SMD (LL34)	PCS	4.00	D1.D2.D5.D6
DI0R30501080-01-00	CHIP ZENER DIODE ZMM5V1 1206 1/2W SMD +/-2%	PCS	1.00	ZD
DI0R80023000-00-00	DIODE-IR EMITTING 4X4MM ST-23G	PCS	2.00	D3.D4
DK0R41200000-00-00	DVD DECK MECHANISM DL-C28 1200W PICKUP	PCS	1.00	
EC0R10709022-01-00	100UF 16V +/-10% 6.3X5MM -40+105"	PCS	8.00	E18.E20.E14.E19.E17.E21.203.22
EC0R22604033-00-00	22UF 25V +/-10% 5X5MM -40+105" I=0.004CV	PCS	2.00	E16.E13
EC0R22704021-01-00	220UF 16V +/-20% 8X5MM -40+105" I=0.004CV (8X5MM)	PCS	3.00	E23.E11.12
EC0R47504053-01-00	4U7 50V +/-10% (4X5MM) -40+105"	PCS	2.00	E201.202
EC0R47604024-01-00	47UF 16V +/-20%(6.3X5MM)-40+105" I=0.004CV	PCS	1.00	E204
FC0-42513043-00-00	FLAT CABLE L=130MM 25PIN PH=1.0MM H m	PCB	1.00	COM1
FC0R41613050-00-00	FLAT CABLE 16P L=130MM PH=1.0MM	PCS	1.00	
IC0R11117000-00-00	IC AMS1117-3.3 SOT-223 3PIN	PCS	1.00	U6
IC0R11117001-00-00	IC AMS1117-ADJ SOT-223 3PIN	PCS	1.00	U4
IC0R32402300-00-00	IC BR24L02 SOP8	PCS	1.00	U1
IC0R32980300-00-00	IC MX29LV800T-B-T SOP48 8M=39VF088	PCS	1.00	U5

Part Code	Name/Description	Unit	Qty	Location
IC0R33414300-00-00	IC NJM3414AM,SOP-8PIN	PCS	1.00	U201
IC0R35668300-00-00	AM5668 28PIN HSOP	PCS	1.00	U2
IC0R38202700-00-00	IC SPHE8202D LQFP 216PIN SUNPLUS ONE CHIP IC	PCS	1.00	U3
IC0R38281700-00-00	IC SPHE8281D 216PIN QFP216-0.4	PCS	0.00	U3
IC0R95764300-01-00	DRAM HY57V641620HG-7 54PIN TSOP(II) 143MHZ	PCS	1.00	U7
IM0-04010010-00-00		G	0.06	FC:0.06G
IM0-12010011-00-00		G	0.71	SMT:0.71g
IM0-17000000-00-00	SOLDERING WIRE D=1.0MM 18	G	1.76	FC:1.76G
IM0R21120010-00-00	TAPE ADHESIVE 1/2	M	3.00	FC:3CM
PB0RDV783174-25-M2	P.C.B DV7831-M2 111.9X111.2 T=1.2MM	PCS	1.00	
SE0R88DV7831-01-00	ADHESIVE RUBBER-01 3Tx24x24mm	PCS	1.00	P 8281IC
SK0R03021500-00-00	D TYPE CONNECTOR FEMALE PH=2.00MM 2P L=150+3MM	PCS	1.00	
SK0R15160000-00-00	CHIP CONNECT SOCKET 52271-1659 16P PH=1.0MM	PCS	1.00	CN1
SK0R15240000-01-00	CHIP CONNECT SOCKET 24P PH=0.5MM	PCS	1.00	CN2
SK0R15250001-00-00	CHIP WIRE CONNECT SOCKET 25PIN PH=1.00MM	PCS	1.00	CON25
SW0R10001110-00-00	SWITCH-TACT (CHECK S/W SW-111)	PCS	1.00	SW1
TR0R20772000-00-00	TRANSISTOR KSB772-Y PNP TO-126ML	PCS	0.00	Q5
TR0R69014902-00-00	CHIP TRANSISTOR C9014 SOT-23 NPN	PCS	1.00	Q1
TR0R71132800-00-00	CHIP TRANSISTOR 2SB1132 PNP SOT-89	PCS	2.00	Q2.Q3
TR0R79015806-00-00	CHIP TRANSISTOR 9015 PNP SOT23	PCS	1.00	Q4

# KB SCH

1

2

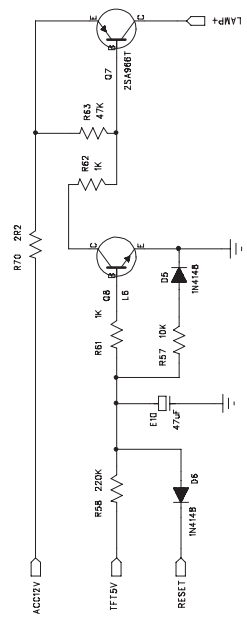
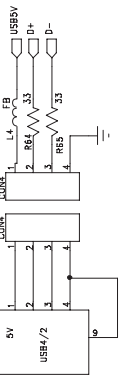
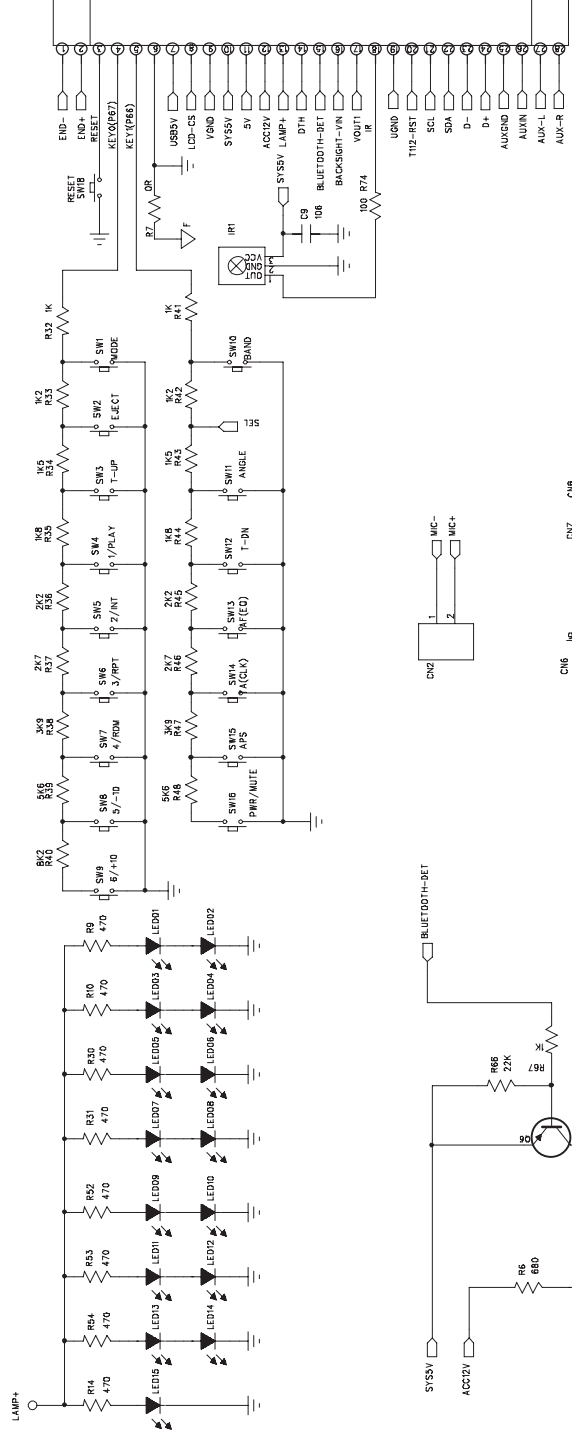
3

4

5

6

REVISION RECORD	
ECD NO.	DATE



COMPANY:		DRAWING NO:		REV:	
TITLE:		SIZE:		CODE:	
DRAWN:	DATED:	CHECKED:	DATED:	QUALITY CONTROL:	DATED:
RELEASED:	DATED:				
SCALE:				SHEET:	OF

# KB SCH

1

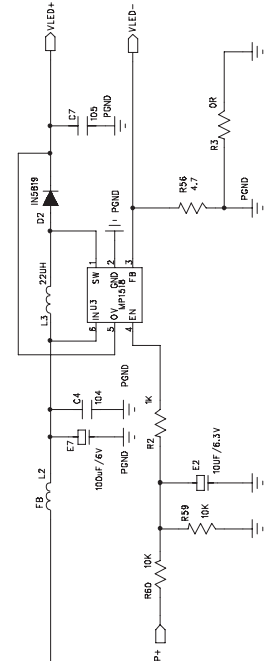
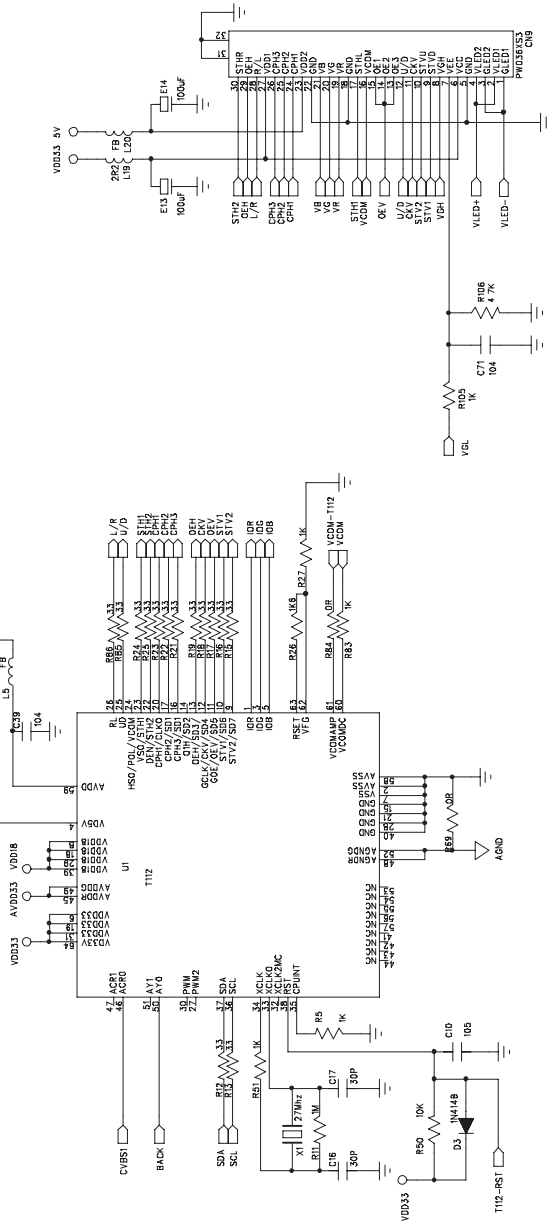
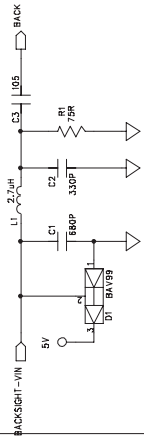
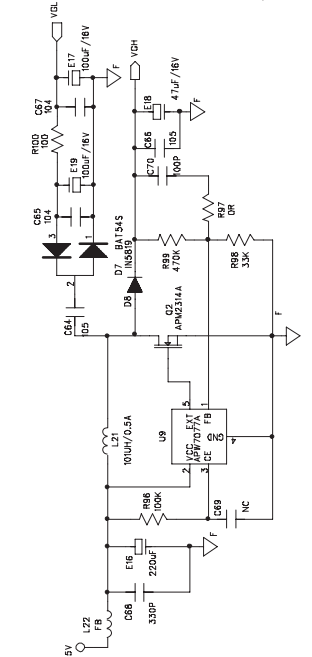
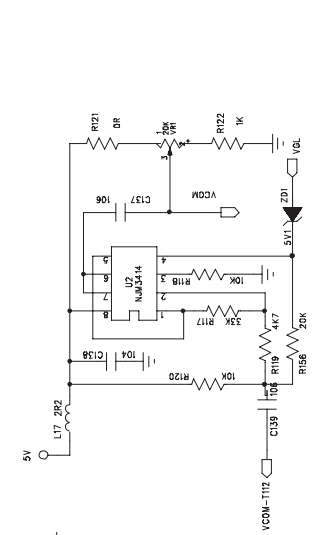
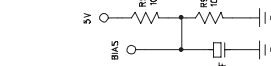
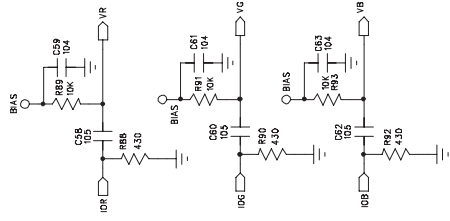
2

3

4

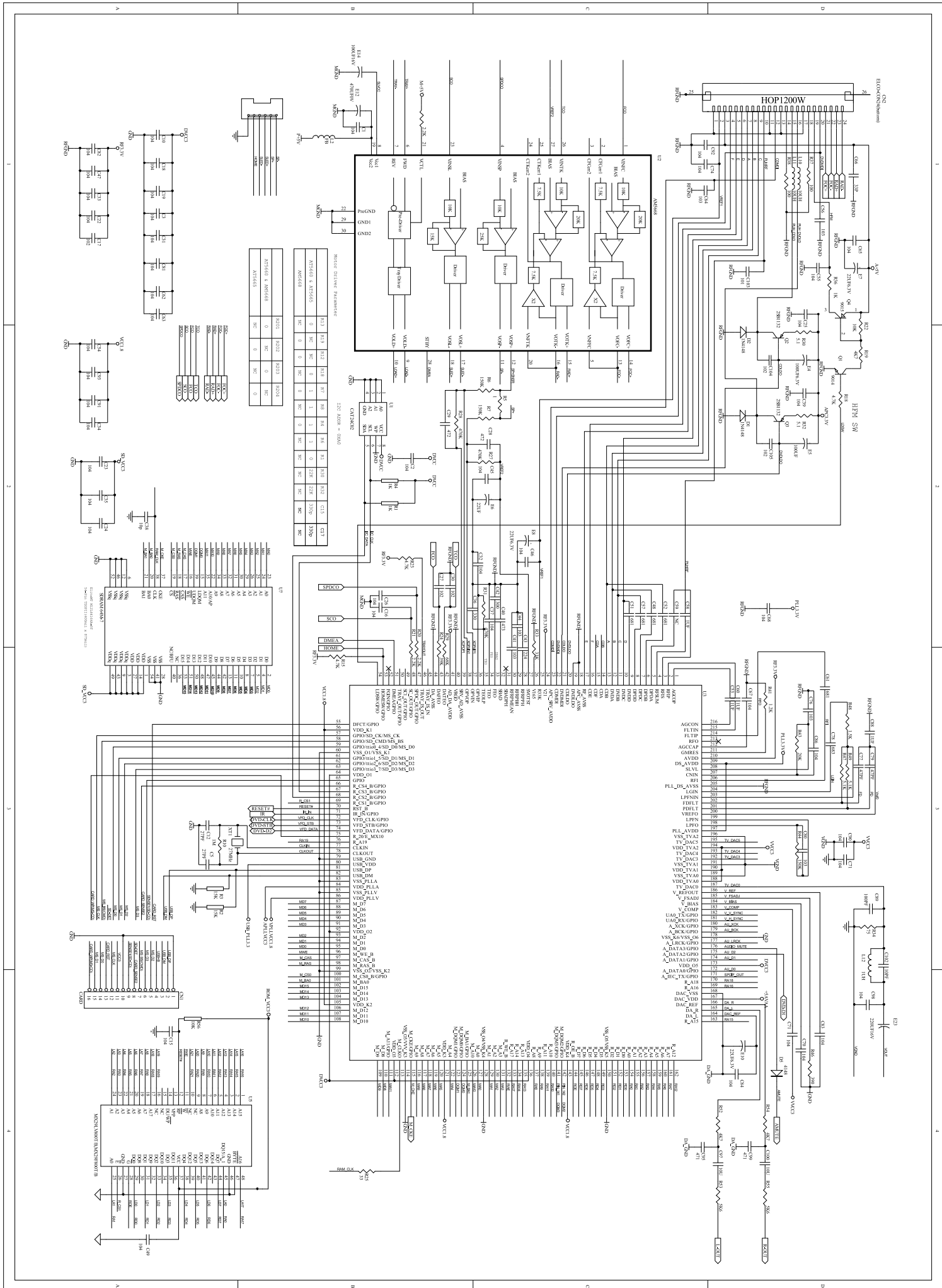
5

6

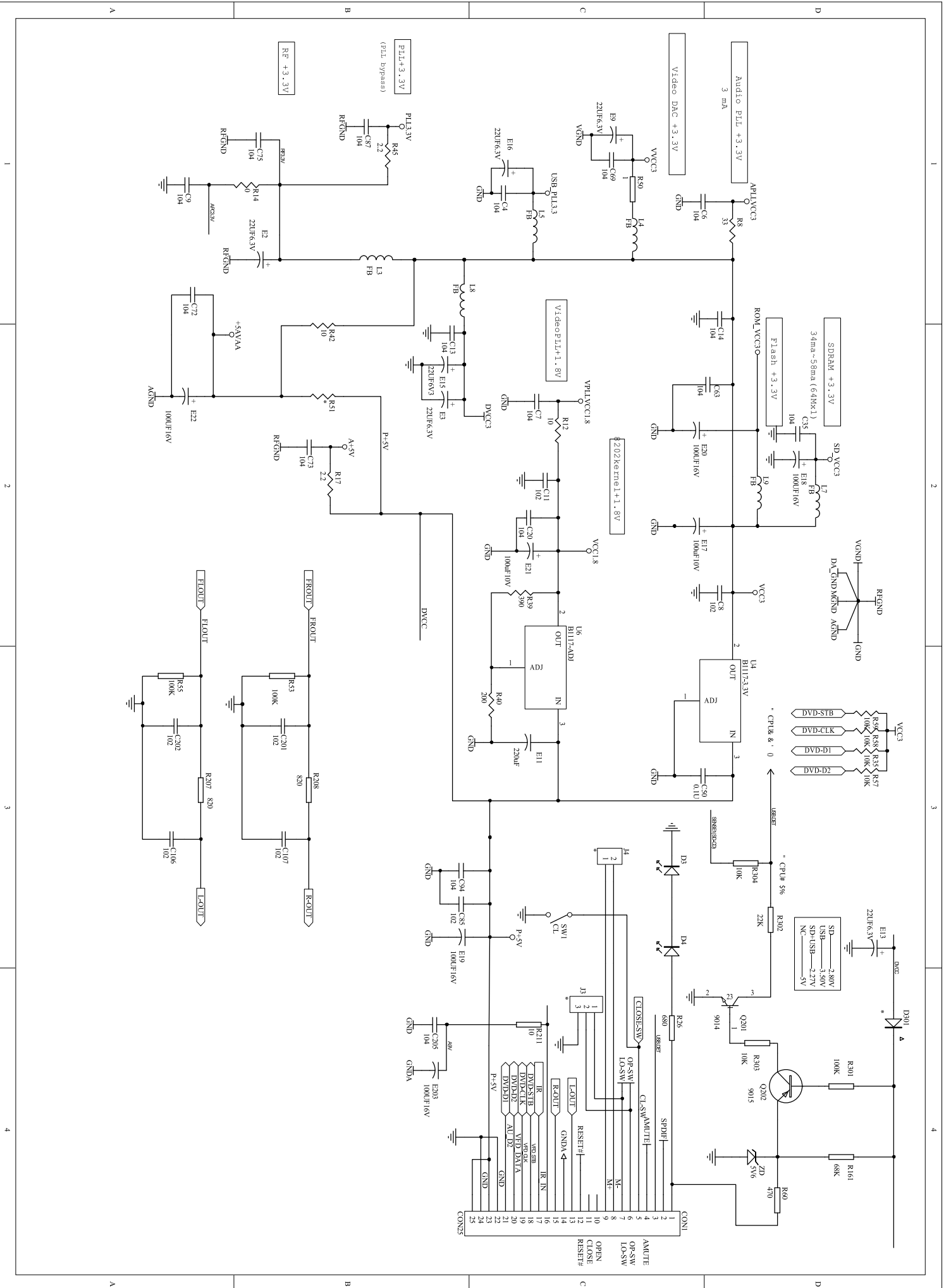


COMPANY:	
TITLE:	
CODE:	
SIZE:	
DRAWING NO:	
REV:	
SCALE:	
SHEET:	OF

# MPEG Board



# MPEG Board



Part Code	Name/Description	Unit	Qty	Location
CC0R10110540-00-00	CHIP CAP 0603 101P NPO 50V +/-5%	PCS	1.00	C70
CC0R10410540-00-00	CHIP CAP 0603 104P 25V X7R +/-10%	PCS	22.00	C20.14.13.12.11.31.26.25.23.22.21.67 .65.4.39.34.33.32.71.63.
CC0R10510300-00-00	CHIP CAP 0805 U =1.25MM 1UF X7R 25V +/-10%	PCS	2.00	C64.66
CC0R10510540-00-00	CHIP CAP 0603 1UF X7R 16V +/-10%	PCS	7.00	C7.19.58.62.60.10.3
CC0R10630100-00-00	CHIP CAP 0805 10UF X5R 10V +/-10%	PCS	3.00	C9.C139.C137
CC0R10650390-00-00	TANTALUM CAP 3528 10UF 20V 85" +/-10%	PCS	1.00	E2
CC0R10750040-00-00	TANTALUM CAP 3528 100UF 6.3V +/-10%	PCS	8.00	E13.7.1.9.8.5.4.3
CC0R10750130-00-00	TANTALUM CAP 6032 100UF 10V +/-20%	PCS	2.00	E15.E14
CC0R10750200-00-00	TANTALUM CAP 2816 (SIEZE D) 100UF 16V +/-20%	PCS	2.00	E17.E19
CC0R22759000-00-00	TANTALUM CAP 6032 220UF 6V3 +/-20%	PCS	1.00	E16
CC0R30010540-00-00	CHIP CAP 0603 30P NPO 50V +/-5%	PCS	2.00	C16.C17
CC0R33115540-00-00	CHIP CAP 0603 331P X7R 50V +/-10%	PCS	3.00	C2.C24.C68
CC0R47650200-00-00	TANTALUM CAP 2412(SIZE C) 47UF 16V +/-20%	PCS	1.00	E18
CC0R68110540-00-00	CHIP CAP 0603 681P X7R 50V +/-10%	PCS	2.00	C28.C1
CF0R12700000-00-00	CRYSTAL B 27MHZ 2LEG 49US +/-10PPM	PCS	1.00	X1
CH0R01220004-01-00	CHIP INDUCTOR COLL SMD 6.2X3.2MM 22UH +/-10%	PCS	1.00	L3
CH0R04310000-00-00	CHIP FERRITE BEED 1206 FB-310	PCS	9.00	L2.L4.L5.L11.L12.L13.L20.L22.L7
CH0R09101001-00-00	CHIP INDUCTANCE 100UH/0.5A CD54 5.8X4.5MM +/-10%	PCS	1.00	L21
CH0R09278000-02-00	CHIP INDUCTANCE 0805 2.7UH +/-10%	PCS	2.00	L1.9
CR0R00050410-00-00	CHIP RESISTOR 0603 0 OHM 1/10W 50V +/-5%	PCS	7.00	R69.8.121.3.97.84.7
CR0R00051210-00-00	CHIP RESISTOR 0805 0 1/8W 100V +/-5%	PCS	1.00	L10
CR0R00051510-00-00	CHIP RESISTOR 1206 0 OHM 1/4W 200V +/-5%	PCS	2.00	R76.77
CR0R10050410-00-00	CHIP RESISTOR 0603 10 OHM 1/10W 50V +/-5%	PCS	1.00	R100
CR0R10150410-00-00	CHIP RESISTOR 0603 100 OHM 1/10W 50V +/-5%	PCS	2.00	R74.R68
CR0R10250410-00-00	CHIP RESISTOR 0603 1K OHM 1/10W 50V +/-5%	PCS	10.00	R51.41.32.27.122.83.105.2.67.5
CR0R10350410-00-00	CHIP RESISTOR 0603 10K OHM 1/10W 50V +/-5%	PCS	10.00	R60.59.50.120.118.94.93.91.89.95.

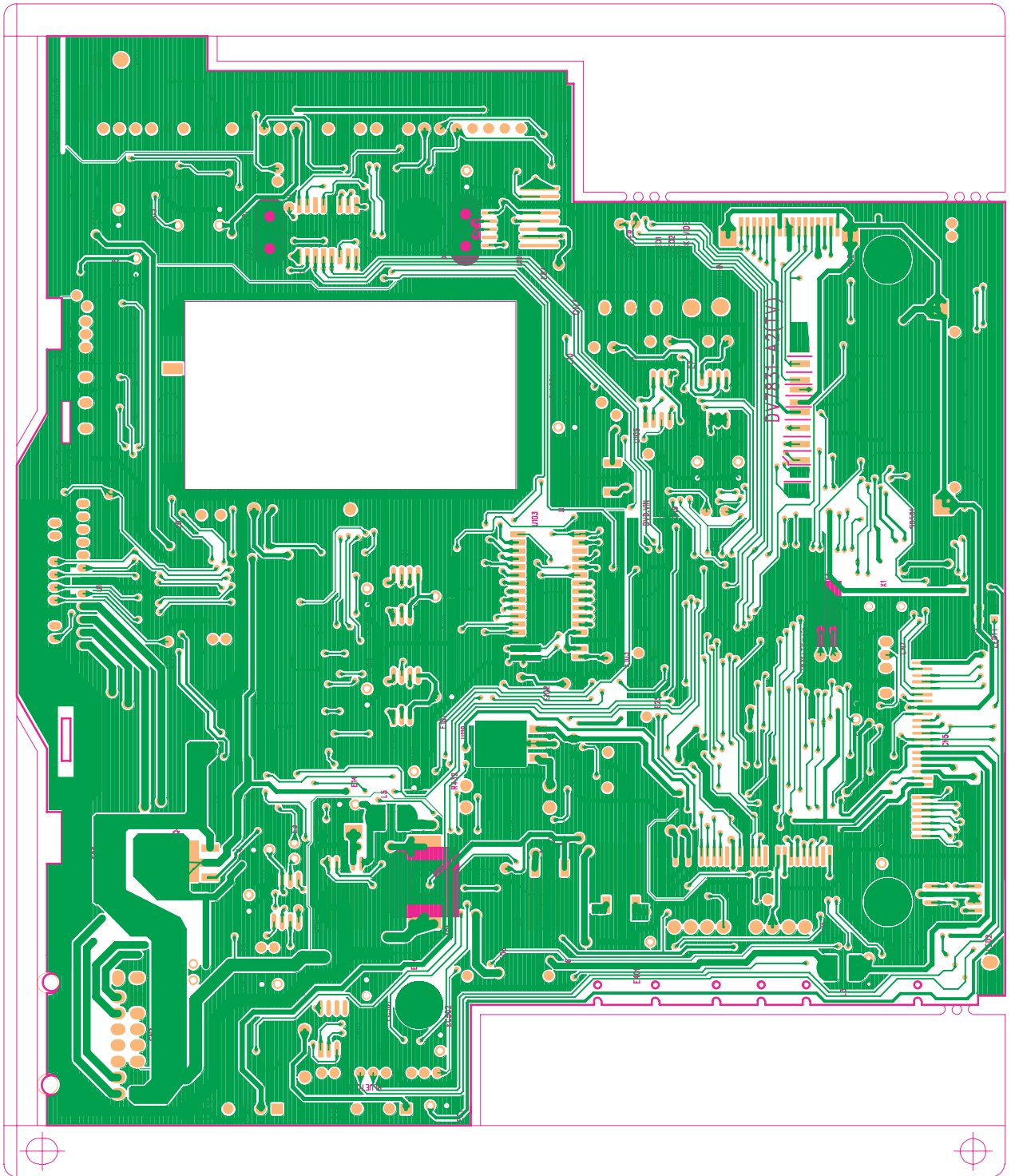
Part Code	Name/Description	Unit	Qty	Location
CR0R10450410-00-00	CHIP RESISTOR 0603 100K OHM 1/10W 50V +/-5%	PCS	1.00	R96
CR0R10550410-00-00	CHIP RESISTOR 0603 1M OHM 1/10W 50V +/-5%	PCS	1.00	R11
CR0R12250410-00-00	CHIP RESISTOR 0603 1K2 OHM 1/10W 50V +/-5%	PCS	2.00	R42.R33
CR0R15250410-00-00	CHIP RESISTOR 0603 1K5 OHM 1/10W 50V +/-5%	PCS	4.00	R43.R34.R26.R29
CR0R18250410-00-00	CHIP RESISTOR 0603 1K8 OHM 1/10W 50V +/-5%	PCS	2.00	R44.R35
CR0R20150410-00-00	CHIP RESISTOR 0603 201 OHM 1/10W 50V +/-5%	PCS	1.00	R126
CR0R20350410-00-00	CHIP RESISTOR 0603 20K OHM 1/10W 50V +/-5%	PCS	1.00	R156
CR0R22250410-00-00	CHIP RESISTOR 0603 2K2 OHM 1/10W 50V +/-5%	PCS	3.00	R45.R36.R6
CR0R22350410-00-00	CHIP RESISTOR 0603 22K OHM 1/10W 50V +/-5%	PCS	1.00	R66
CR0R22850510-00-00	CHIP RESISTOR 1206 2.2 OHM 1/4W 200V +/-5%	PCS	2.00	L17.19
CR0R27250410-00-00	CHIP RESISTOR 0603 2K7 OHM 1/10W 50V +/-5%	PCS	2.00	R46.R37
CR0R33050410-00-00	CHIP RESISTOR 0603 33 OHM 1/10W 50V +/-5%	PCS	16.00	R86.85.25.65.64.24.23.22.21.19.18.17 .16.15.13.12
CR0R33350410-00-00	CHIP RESISTOR 0603 33K OHM 1/10W 50V +/-5%	PCS	2.00	R117.R98
CR0R39150410-00-00	CHIP RESISOTR 0603 391 OHM 1/10W 50V +/-5%	PCS	1.00	R125
CR0R39250410-00-00	CHIP RESISTOR 0603 3K9 OHM 1/10W 50V +/-5%	PCS	2.00	R47.R38
CR0R43150410-00-00	CHIP RESISTOR 0603 431 OHM 1/10W 50V +/-5%	PCS	3.00	R92.R90.R88
CR0R47250410-00-00	CHIP RESISTOR 0603 4K7 OHM 1/10W 50V +/-5%	PCS	2.00	R119.R106
CR0R47450410-00-00	CHIP RESISTOR 0603 470K OHM 1/10W 50V +/-5%	PCS	1.00	R99
CR0R51850410-00-00	CHIP RESISTOR 0603 5.1 OHM 1/10W 50V +/-5%	PCS	1.00	R56
CR0R56250410-00-00	CHIP RESISTOR 0603 5K6 OHM 1/10W 50V +/-5%	PCS	2.00	R39.R48
CR0R75050410-00-00	CHIP RESISTOR 0603 75 OHM 1/10W 50V +/-5%	PCS	2.00	R4.R1
CR0R82150410-00-00	CHIP RESISTOR 0603 821 OHM 1/10W 50V +/-5%	PCS	9.00	R28.20.9.54.53.31.30.14.10
CR0R82250410-00-00	CHIP RESISTOR 0603 8K2 OHM 1/10W 50V +/-5%	PCS	1.00	R40
DI0R10054042-00-00	BAT54S SOT-23 SCHOTTKY BARRIER DIODE	PCS	1.00	D7
DI0R15822080-00-00	CHIP SIGNAL DIODE 1N5822 SMD	PCS	2.00	D2.D8
DI0R24148080-00-00	SIGNAL DIODE 1N4148 (1206) SMD (LL34)	PCS	1.00	D3



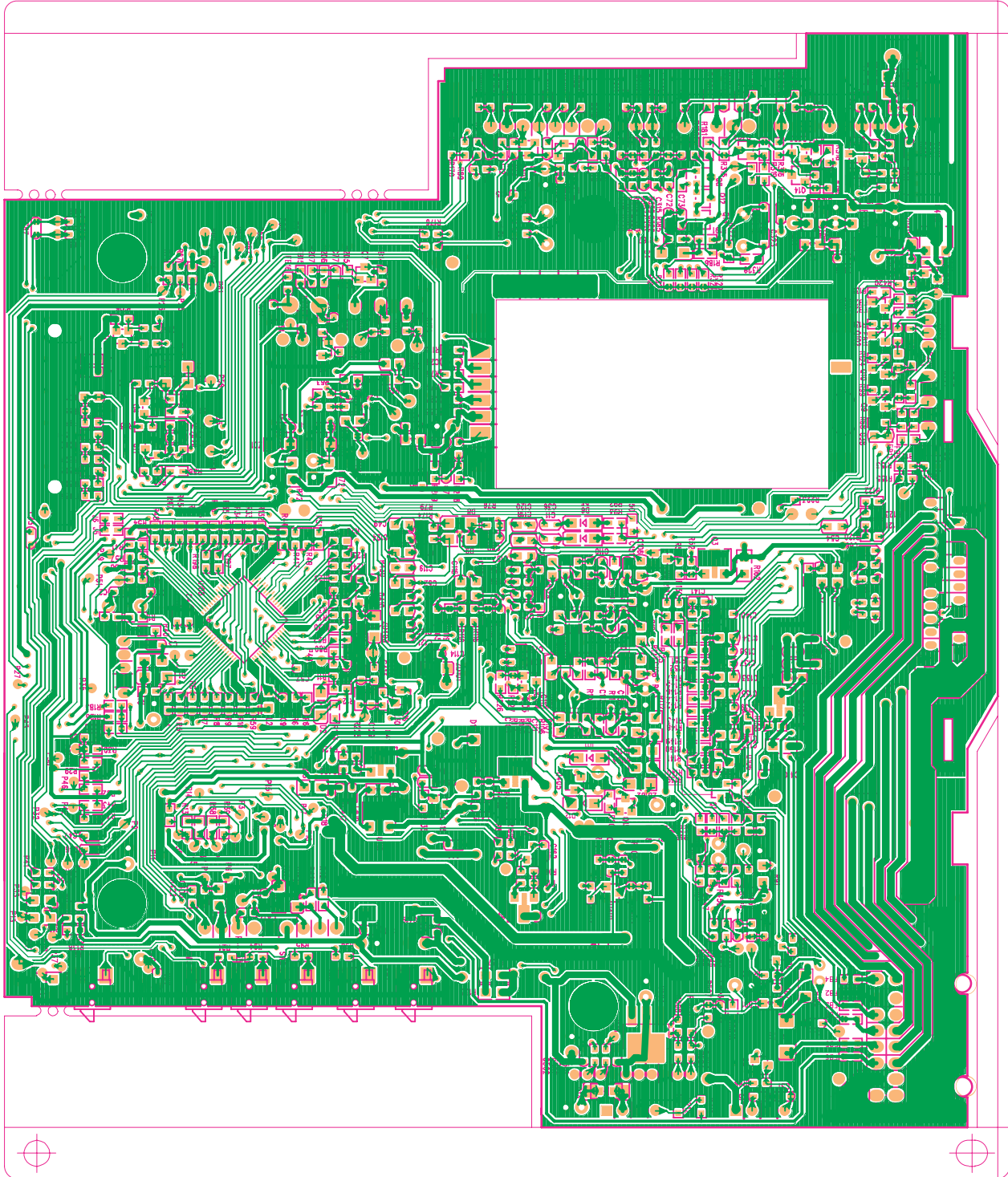
Part Code	Name/Description	Unit	Qty	Location
DI0R30501080-01-00	CHIP ZENER DIODE ZMM5V1 1206 1/2W SMD +/-2%	PCS	1.00	ZD1
DI0R90099000-00-00	HIGH SPEED DOUBLE DIODE BAV99	PCS	2.00	D1.D4
DI0R9DV78330-00-00	0603ESDA-LF	PCS	2.00	R49.52
FC0R42806040-00-00	FLAT CABLE L=60MM 28PIN PH=1.0MM	PCS	1.00	
FC0R42809042-00-00	FLAT CABLE 28P L=90mm PH=1.0mm n C X o 3mm9Q	PCS	1.00	
IC0R11117000-00-00	IC AMS1117-3.3 SOT-223 3PIN	PCS	1.00	U4
IC0R11117001-00-00	IC AMS1117-ADJ SOT-223 3PIN	PCS	1.00	U6
IC0R30112700-00-00	IC T112 QFP64	PCS	1.00	U1
IC0R33204300-00-00	IC MP3204DJ-LF-Z TSOT23-6	PCS	1.00	U3
IC0R33414300-00-00	IC NJM3414AM,SOP-8PIN	PCS	1.00	U2
IC0R37077300-00-00	IC APW7077A SOT-23-5	PCS	1.00	U9
LD0R0DV78330-00-00	LCD DISPLAY DV7833 16:9 LCD PANNEL 3.5t TF	PCS	1.00	
LE0R56120680-00-00	CHIP LED (ORANGE) 0805 (HT-170D)	PCS	20.00	
PB0RDV783173-20-K3	P.C.B DV7831-K3D TVE 105.3X23MM FR4 TH=1.0MM	PCS	1.00	
PB0RDV783174-20-K4	P.C.B DV7831-K4 66X40MM FR4 TH=1.2MM	PCS	1.00	
PB0RDV783474-00-H1	P.C.B DV7834-H1 17.2X14.6MM FR4 TH=1.2MM	PCS	1.00	
PB0RDV783474-00-U1	P.C.B DV7834-U1 22X8MM FR4 TH=1.2MM	PCS	1.00	
PB0RDV783474-07-D1	P.C.B DV7834-D1 166x53.2MM FR4 HB TH=1.2mm (+TV)	PCS	1.00	
SK0R05003130-00-00	PJ-313B 4F D=3.5MM PHONE JACK	PCS	1.00	AUX
SK0R13280000-00-00	28PIN CONNECTOR MALE 1.5MM	PCS	1.00	CON5
SK0R14280000-00-00	28PIN CONNECTOR FEMALE PH=1.5MM	PCS	1.00	CON2
SK0R15280000-00-01	CHIP CONNECT SOCKET 1.0S-1S-28PWB	PCS	2.00	CN4.CON4
SK0R15300000-00-04	CHIP CONNECT SOCKET 30P PH=0.5MM	PCS	1.00	CN9
SK0R28000000-00-00	USB SOCKET SERIES	PCS	1.00	
SW0R10020501-00-00	TACT SWITCH 2PIN 5MM SMD	PCS	17.00	
TR0R32314800-00-00	APM2314 SOT-23 2A N-CHANNEL MOSFET	PCS	1.00	Q2

Part Code	Name/Description	Unit	Qty	Location
TR0R73906010-00-00	CHIP TRANSISTOR 2N3906K PNP SOT-23	PCS	1.00	Q6
VR0R80001000-00-00	ENCODER VOLUME L=10.0MM EC110201M2B-HA1-033	PCS	1.00	CN3
VR0R92030000-00-00	CHIP POTENTIOMETER 20K SMD	PCS	1.00	VR1D
			81	

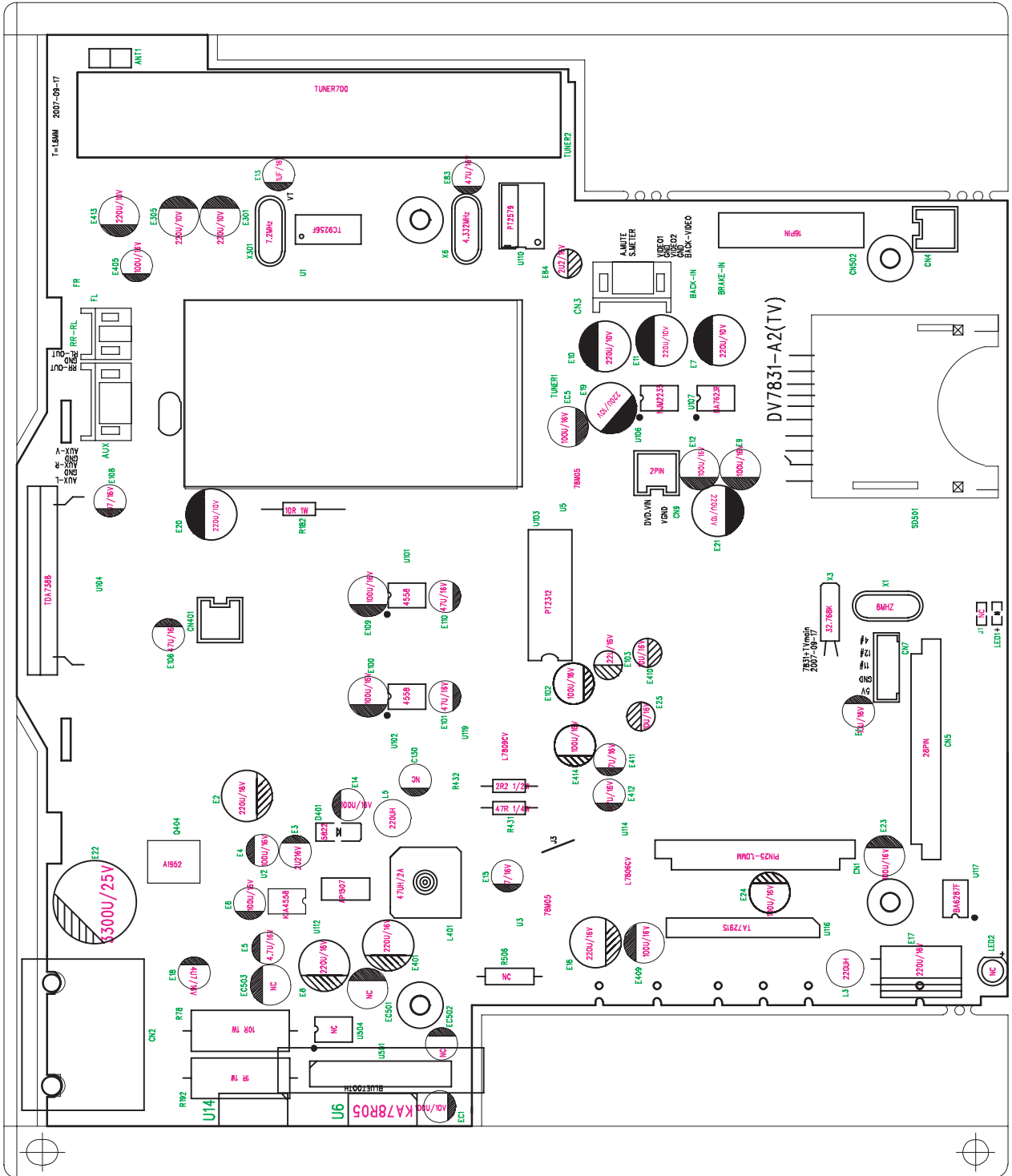
# TOP Main Layout



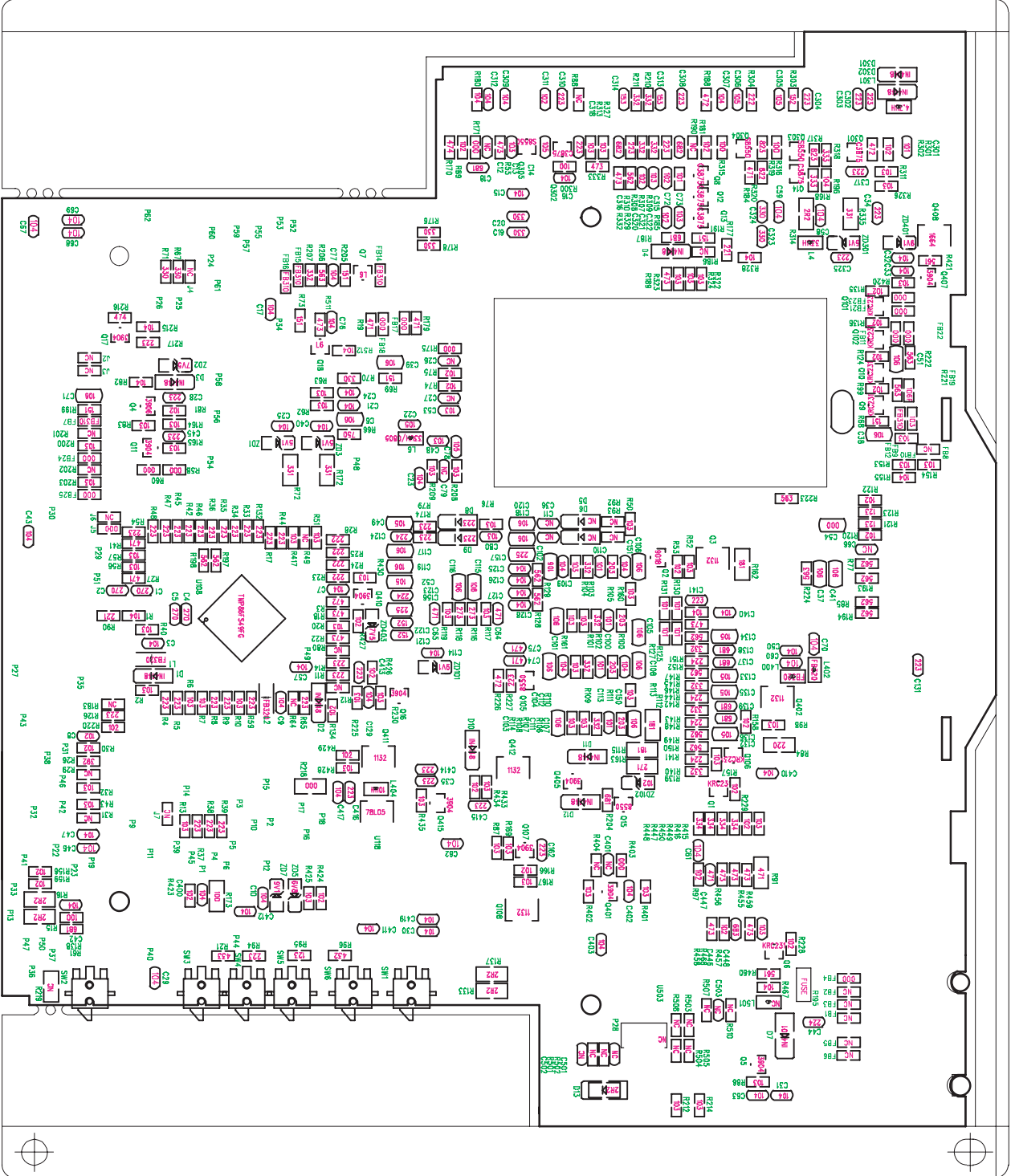
# BOT Main Layout



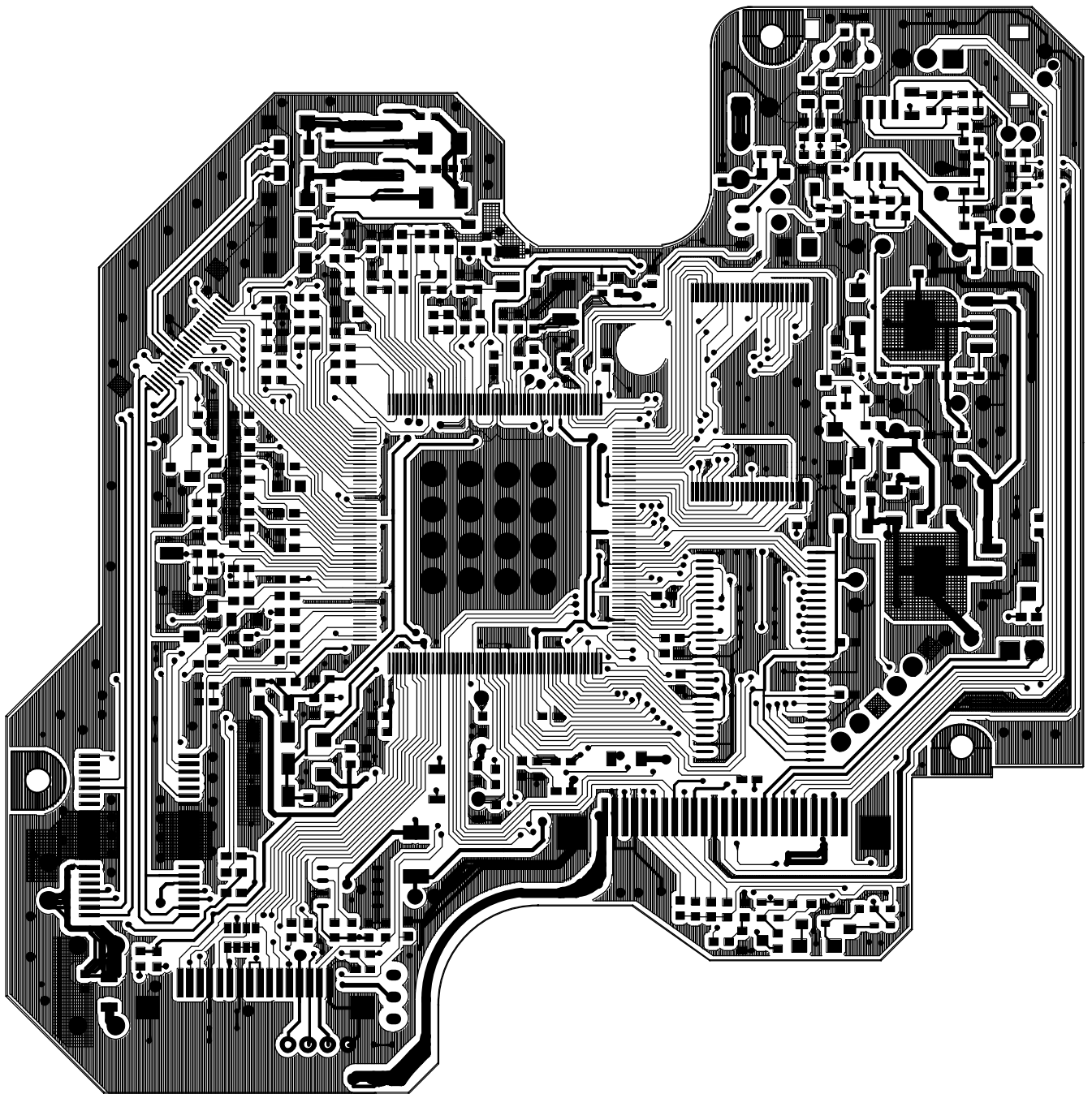
# TOP Main



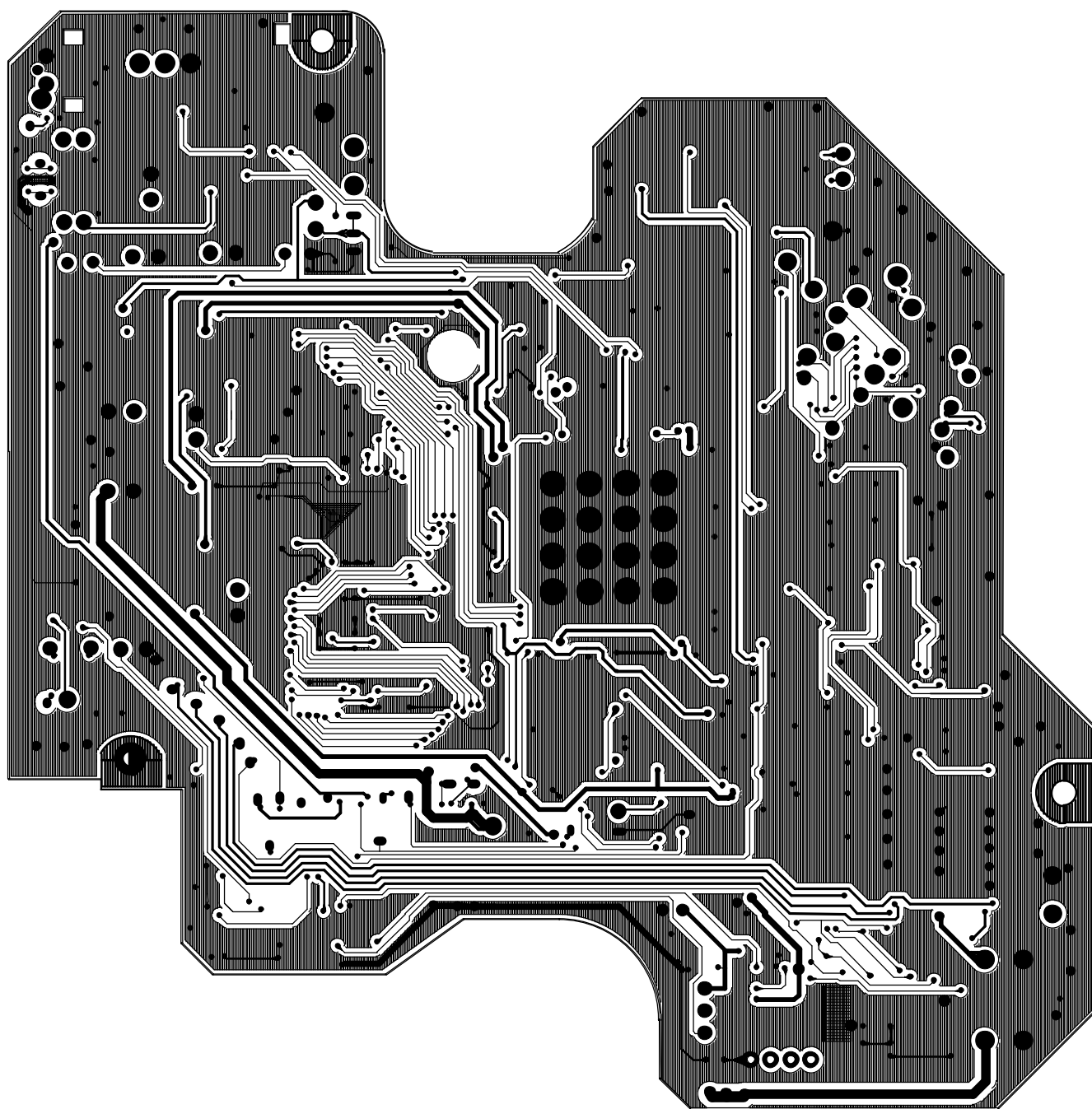
# BOT Main



# Servo Layout Top

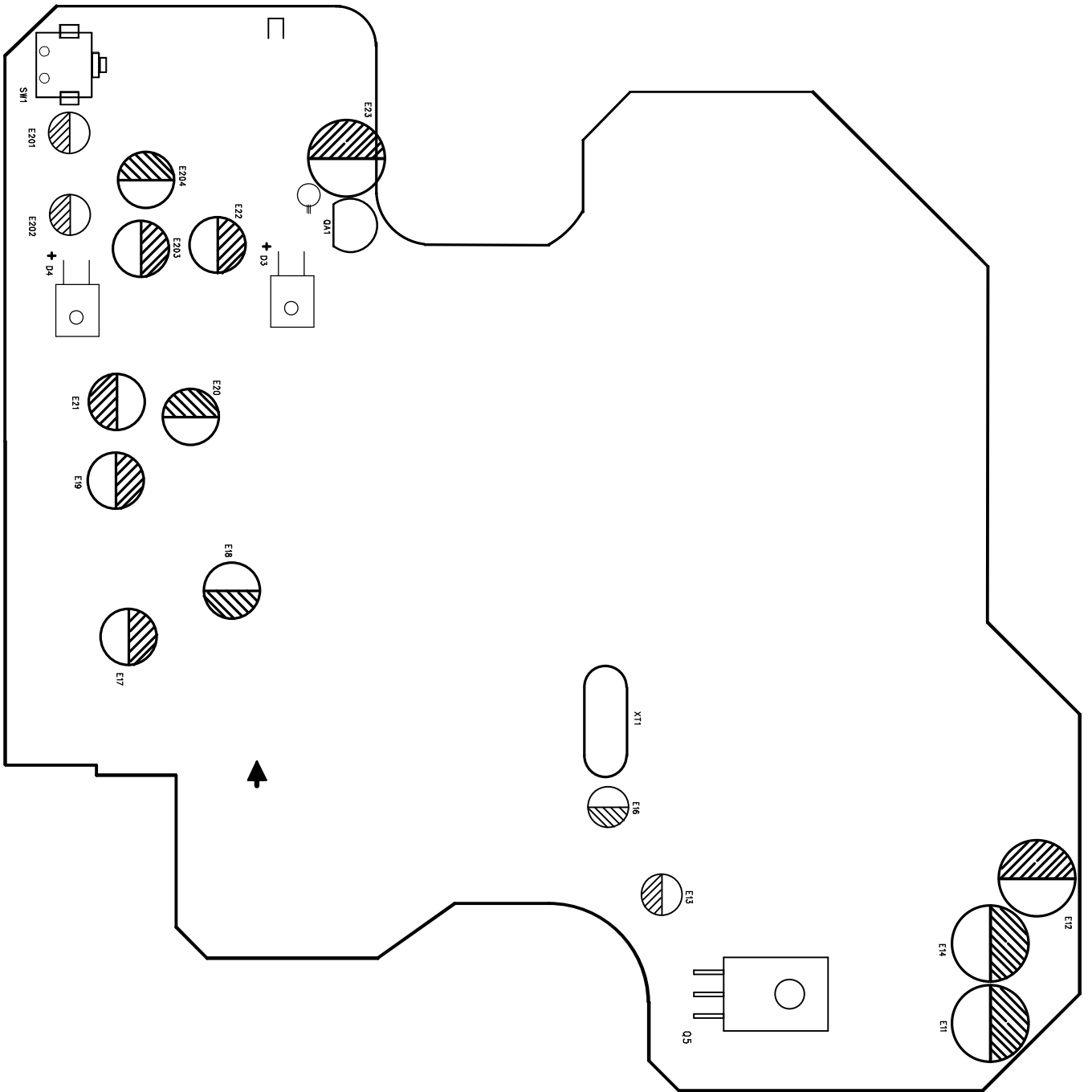


# Servo Layout Bot



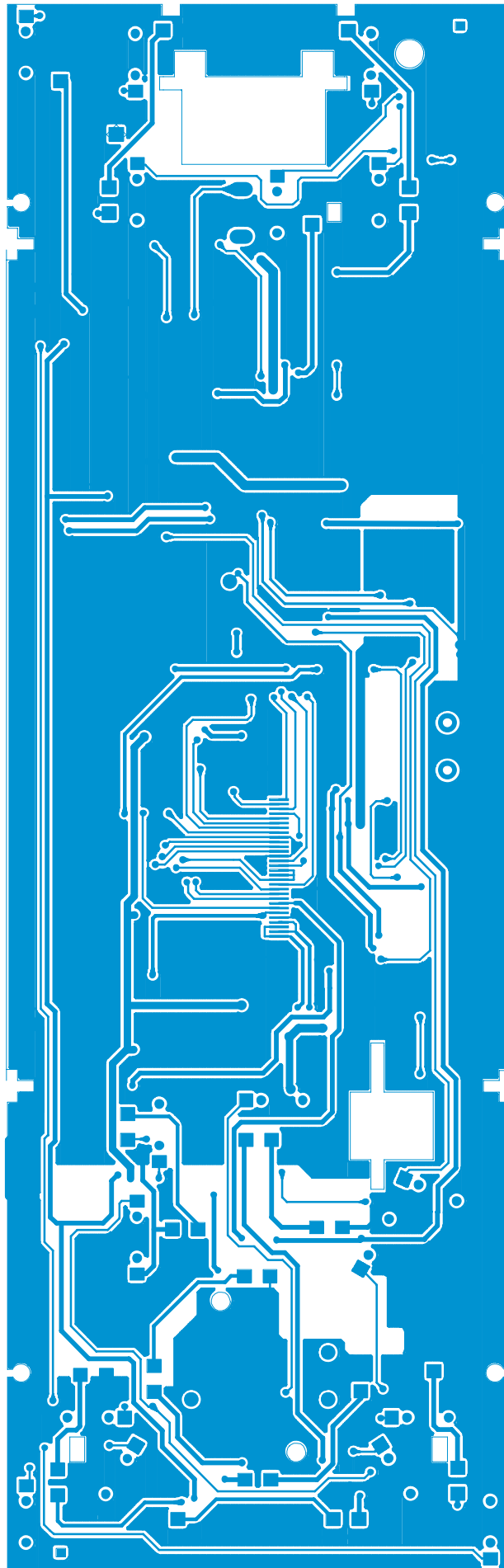


# Servo Top

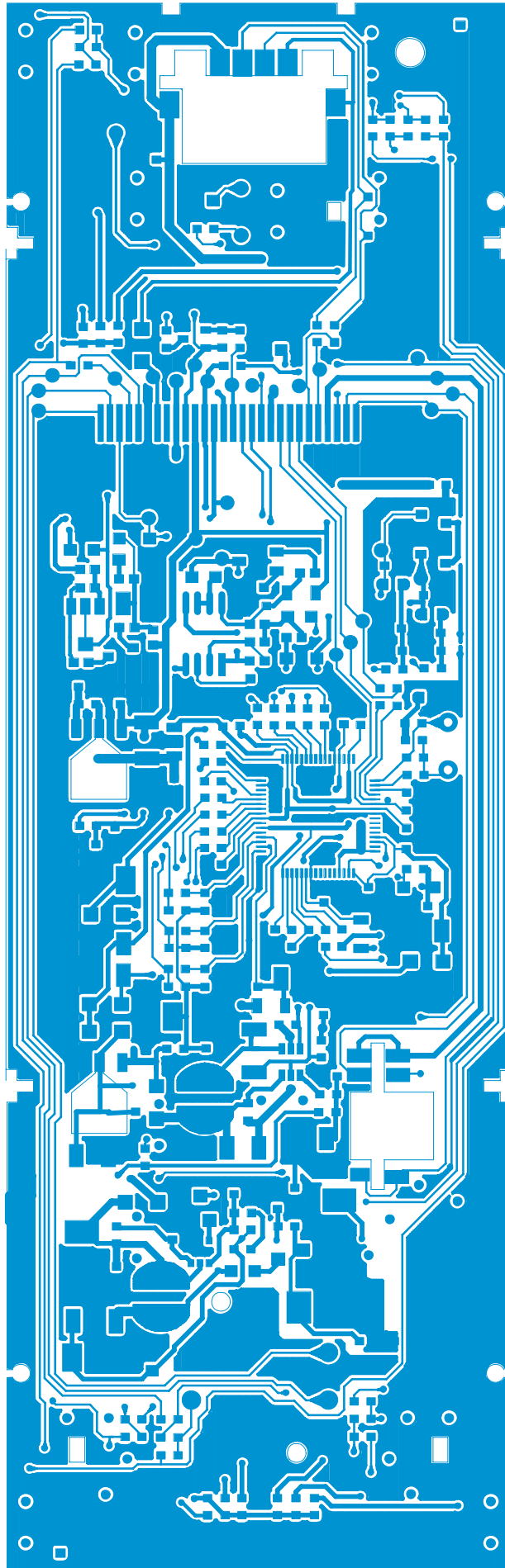




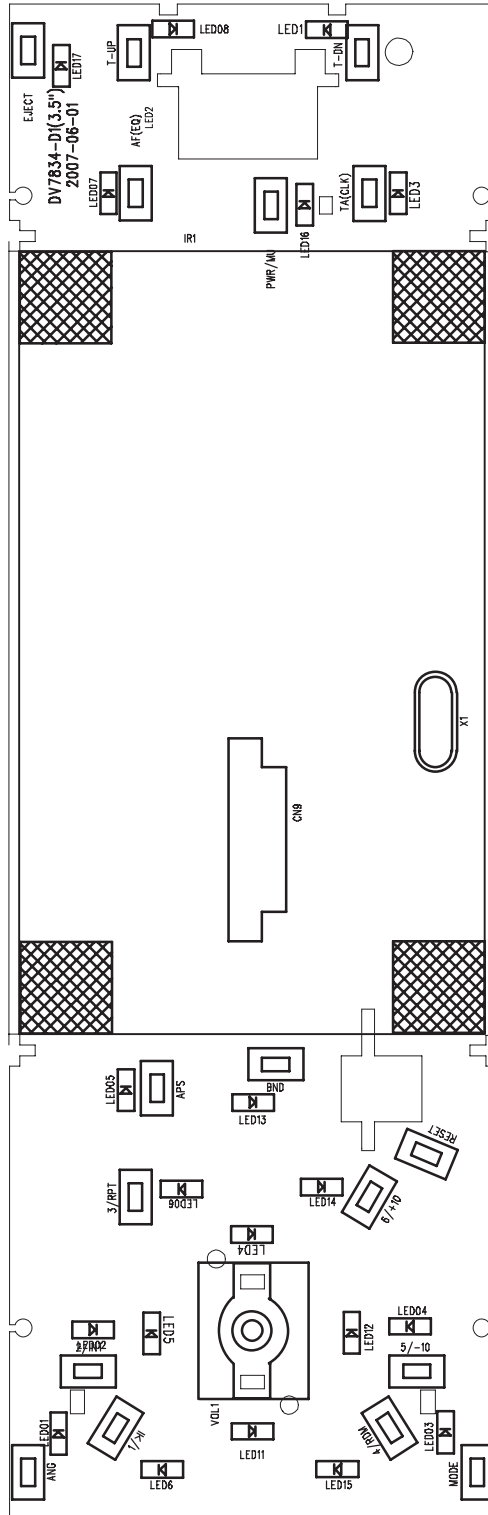
# TOP KB



# BOT KB layout



# TOP KB Layout



# BOT KB

